

# High Performance Liquid Chromatography

## 1. Analysis Information

|                 |                      |
|-----------------|----------------------|
| Product Name:   | R428                 |
| Operator:       | David                |
| Injection Date: | 5/29/2015 9:40:04 AM |
| Batch No.:      | 2                    |

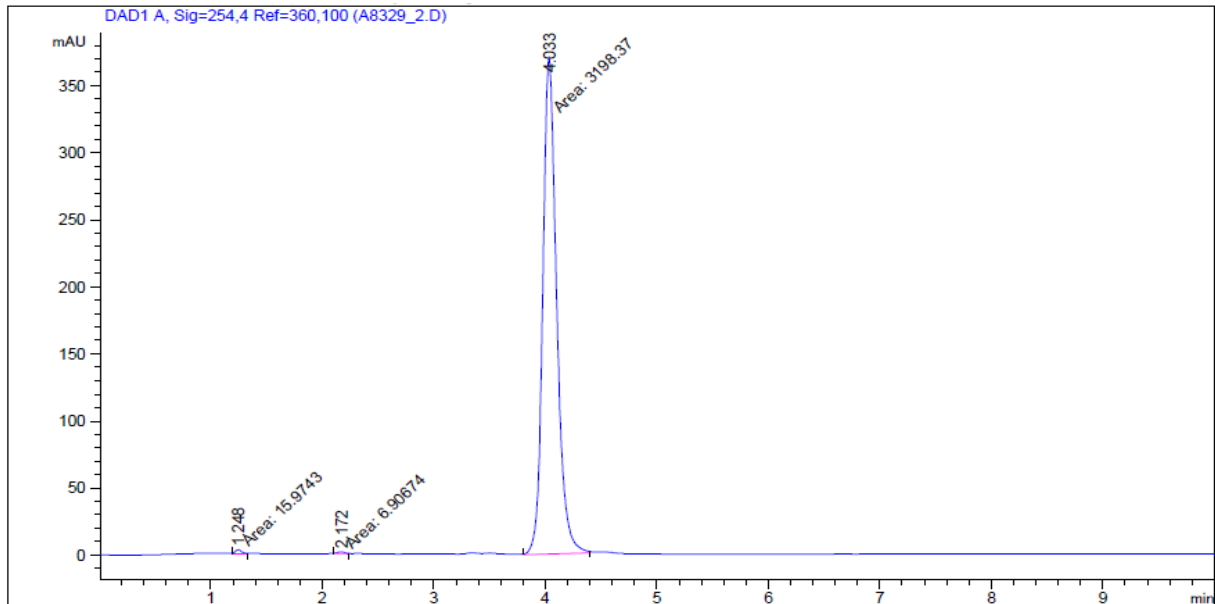
## 2. HPLC Condition

|            |  |
|------------|--|
| Column:    | Athena C18, 3 $\mu$ m, 2.1mm $\times$ 100 mm             |
| Solvent A: | 0.1% H <sub>3</sub> PO <sub>4</sub> in 100% Acetonitrile |
| Solvent B: | 0.1% H <sub>3</sub> PO <sub>4</sub> in 100% Water        |

| Gradient: | Time    | A    | B    |
|-----------|---------|------|------|
|           | 0.0min  | 0%   | 100% |
|           | 4.0min  | 95%  | 5%   |
|           | 9.0min  | 10%  | 90%  |
|           | 10.0min | 10%  | 90%  |
|           | 10.0min | Stop | Stop |

|             |             |
|-------------|-------------|
| Flow rate:  | 0.4ml/min   |
| Wavelength: | 254nm       |
| Volume:     | 1.0 $\mu$ l |

## 3. Result



| Rank | RetTime(min) | Area(mAU*s) | Area %  |
|------|--------------|-------------|---------|
| 1    | 1.248        | 15.97431    | 0.4959  |
| 2    | 2.172        | 6.90674     | 0.2144  |
| 3    | 4.033        | 3198.36987  | 99.2897 |