

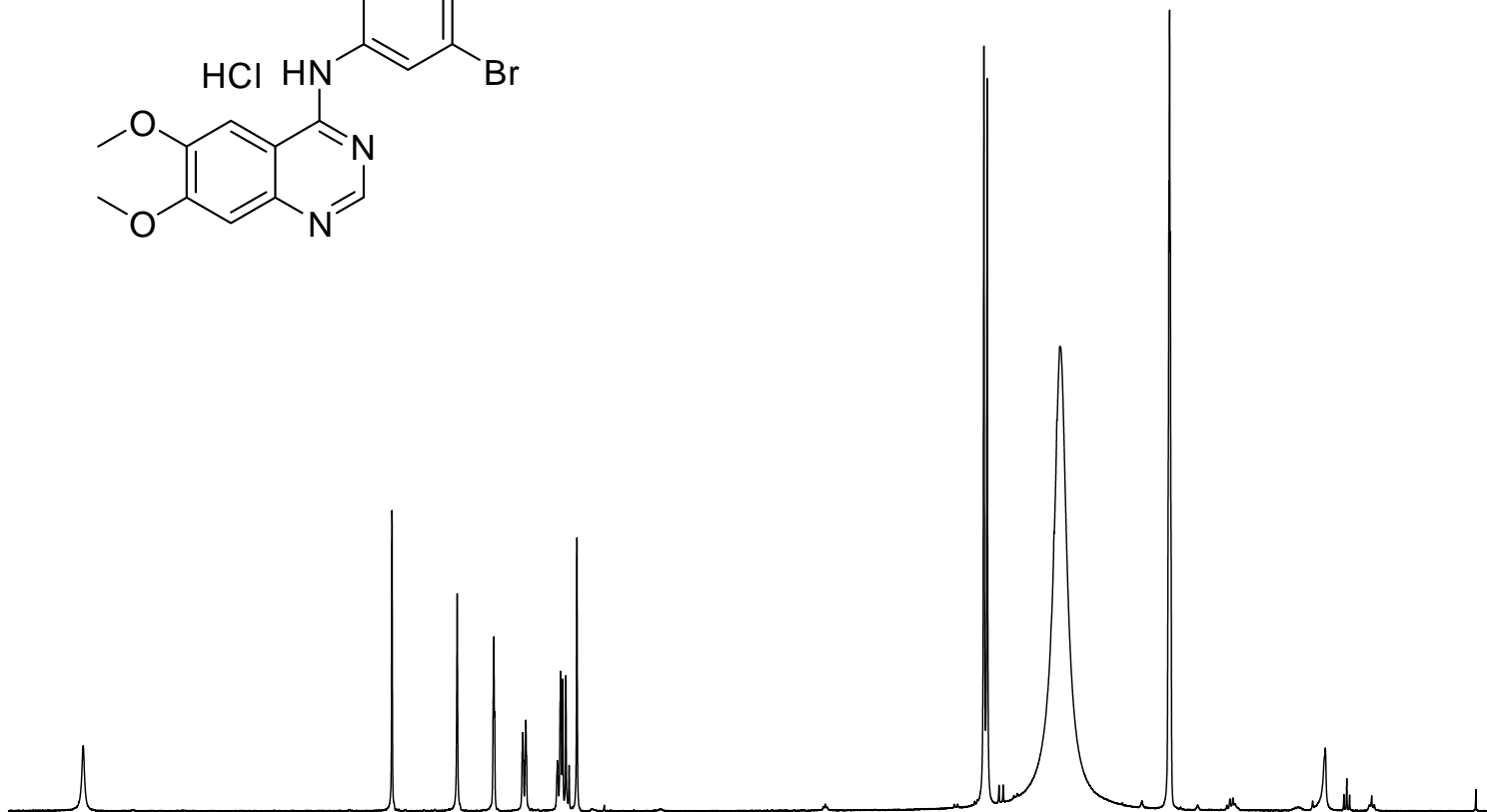
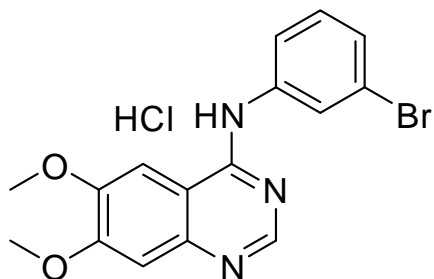
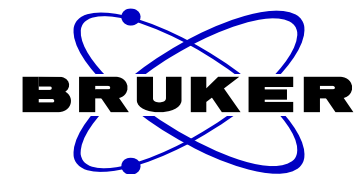
—11.383

8.856
8.322
8.022
8.016
7.786
7.760
7.503
7.497
7.476
7.459
7.433
7.407
7.343

<4.014
<3.987

—3.389

<2.500
<2.494
<2.488



11 10 9 8 7 6 5 4 3 2 1 ppm

0.89

1.00

0.99

1.03

1.01

2.03

1.00

3.00
2.94

NAME PD 153035 hydrochloride
EXPNO 1
PROCNO 1
Date_ 20131021
Time_ 15.25
INSTRUM spect
PROBHD 5 mm PABBO BB-
PULPROG zg30
TD 32768
SOLVENT DMSO
NS 16
DS 2
SWH 6009.615 Hz
FIDRES 0.183399 Hz
AQ 2.7263477 sec
RG 287
DW 83.200 usec
DE 6.50 usec
TE 298.0 K
D1 1.00000000 sec
TD0 1

==== CHANNEL f1 =====
SF01 300.1324010 MHz
NUC1 1H
P1 12.90 usec
SI 65536
SF 300.1300097 MHz
WDW EM
SSB 0
LB 0.30 Hz
GB 0
PC 1.00