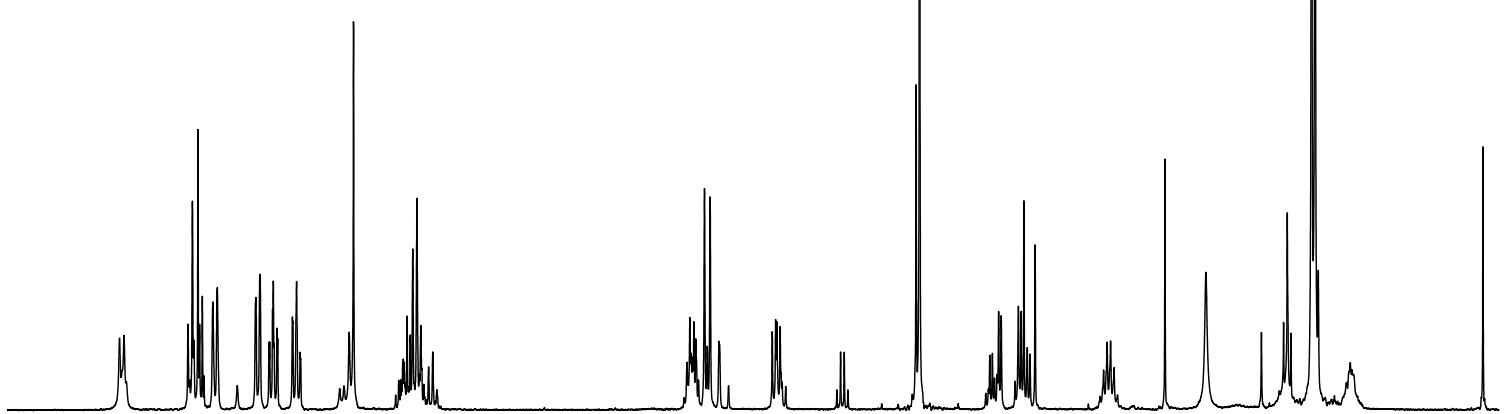
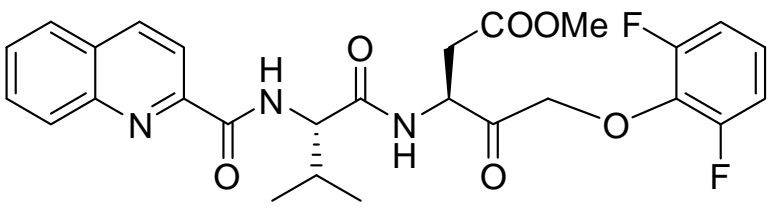


8.750  
8.338  
8.309  
8.274  
8.263  
8.245  
8.178  
8.149  
7.901  
7.874  
7.794  
7.789  
7.766  
7.761  
7.666  
7.663  
7.639  
7.302  
7.274  
6.929  
6.909  
6.893  
6.866  
6.841  
5.110  
5.083  
5.072  
5.016  
4.979  
4.579  
4.558  
4.550  
4.528  
3.654  
3.632  
3.123  
3.106  
2.996  
2.978  
2.960  
2.888  
1.110  
1.087



9.0 8.5 8.0 7.5 7.0 6.5 6.0 5.5 5.0 4.5 4.0 3.5 3.0 2.5 2.0 1.5 1.0 ppm

1.00  
2.07  
1.01  
1.05  
1.05  
1.03  
0.51  
2.98  
1.28  
1.91  
1.05  
0.35  
0.69  
2.32  
1.06  
1.84  
1.07  
5.72

```
NAME          Q-VD (OMe) -Oph
EXPNO          1
PROCNO         1
Date_          20130509
Time_          9.32
INSTRUM        spect
PROBHD         5 mm PABBO BB-
PULPROG        zg30
TD             32768
SOLVENT        CDCl3
NS             8
DS             2
SWH            6009.615 Hz
FIDRES         0.183399 Hz
AQ            2.7263477 sec
RG            287
DW            83.200 usec
DE            6.50 usec
TE            298.0 K
D1            1.00000000 sec
TD0           1
```

```
===== CHANNEL f1 =====
SFO1          300.1324010 MHz
NUC1           1H
P1            12.90 usec
SI            65536
SF            300.1300058 MHz
WDW           EM
SSB           0
LB            0.30 Hz
GB           0
PC            1.00
```