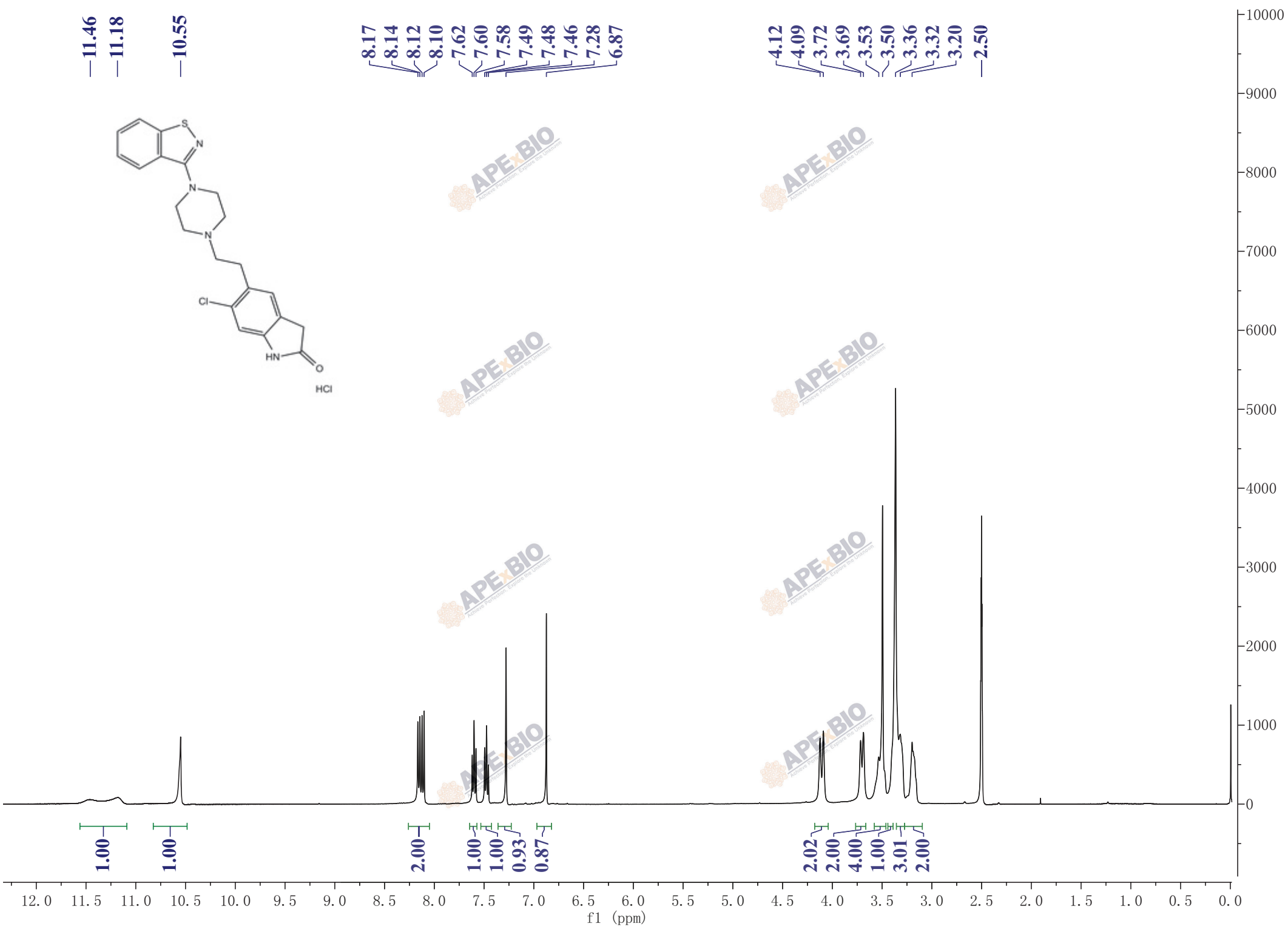
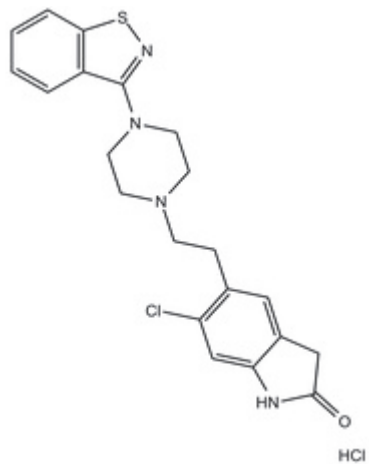


—11.46
—11.18
—10.55

8.17
8.14
8.12
8.10
7.62
7.60
7.58
7.49
7.48
7.46
7.28
6.87

4.12
4.09
3.72
3.69
3.53
3.50
3.36
3.32
3.20
—2.50



1.00
1.00

2.00
1.00
1.00
0.93
0.87

2.02
2.00
4.00
1.00
3.01
2.00

12.0 11.5 11.0 10.5 10.0 9.5 9.0 8.5 8.0 7.5 7.0 6.5 6.0 5.5 5.0 4.5 4.0 3.5 3.0 2.5 2.0 1.5 1.0 0.5 0.0

f1 (ppm)