

Certificate of Analysis

Product Name: ARRY 520 trifluoroacetate

Cat. No.: A4458

Batch No.: 1

Physical and Chemical Properties

Batch Molecular Formula: C₂₀H₂₂F₂N₄O₂S·CF₃CO₂H

Batch Molecular Weight: 420.48

Purity: >98%

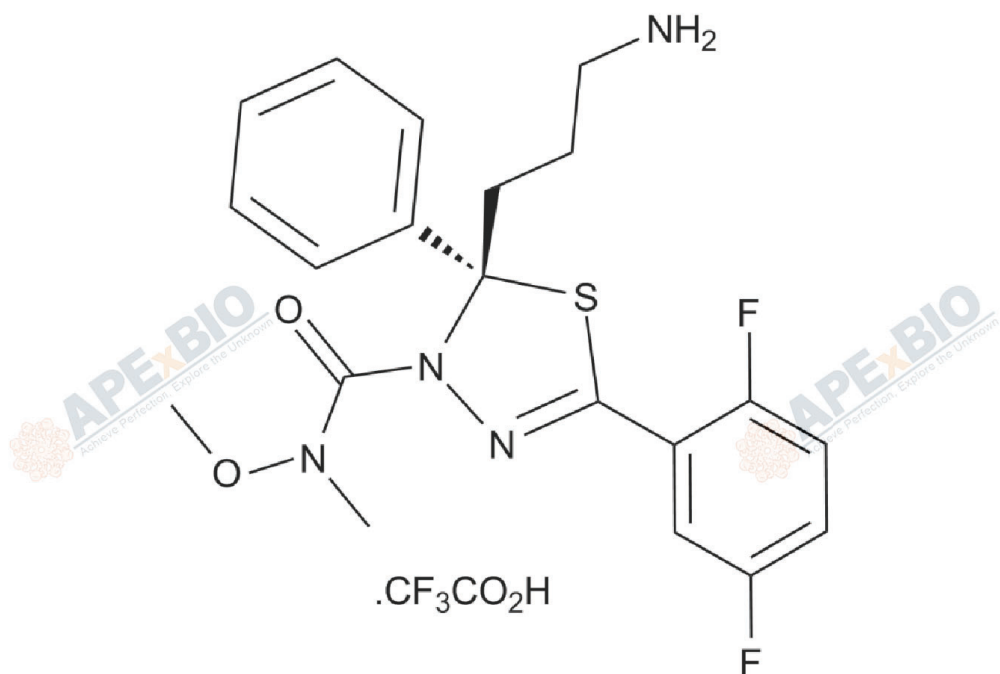
Cas No.: 885060-09-3

Analytical Data

HPLC: HPLC

Mass Spectrum: Consistent with structure

Structure



Caution

FOR RESEARCH PURPOSES ONLY.

NOT FOR HUMAN, VETERINARY DIAGNOSTIC OR THERAPEUTIC USE.

APEX BIO Technology

www.apexbt.com

7505 Fannin street, Suite 410, Houston, TX 77054.

Tel: +1-832-696-8203 | Fax: +1-832-641-3177 | Email: info@apexbt.com