

High Performance Liquid Chromatography

Analysis Information

Product Name: FK866 (APO866)
Operator: David
Injection Date: 3/18/2019 7:21:28 PM
Batch No.: 1

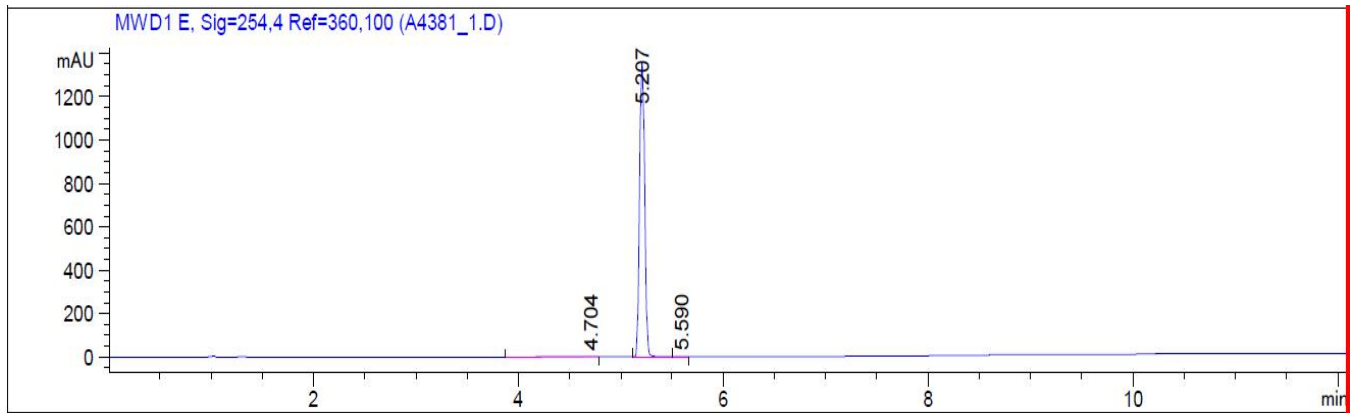
HPLC Condition

Column : ZORBAX Eclipse Pluse C18 3.5 μ m 4.6mmx100mm
Solvent A: H2O+0.1%TFA
Solvent B: ACN+0.1%TFA
Gradient:

Time	A	B
0.0min	80%	20%
2.0min	80%	20%
7.0min	5%	95%
10.00min	0%	100%
12.00min	0%	100%
12.10min	80%	20%
15.00min	Stop	Stop

Flow rate: 1mL/min
Wavelength: 254nm
Volume: 3 μ l

Result



Rank	RetTime(min)	Area(mAU*s)	Area %
1	4.704	14.68787	0.3130
2	5.207	4672.92627	99.5788
3	5.590	5.07909	0.1082

Caution

FOR RESEARCH PURPOSES ONLY.

NOT FOR HUMAN, VETERINARY DIAGNOSTIC OR THERAPEUTIC USE.

APEX BIO Technology

www.apexbt.com

7505 Fannin street, Suite 410, Houston, TX 77054.

Tel: +1-832-696-8203 | Fax: +1-832-641-3177 | Email: info@apexbt.com