



# High Performance Liquid Chromatography

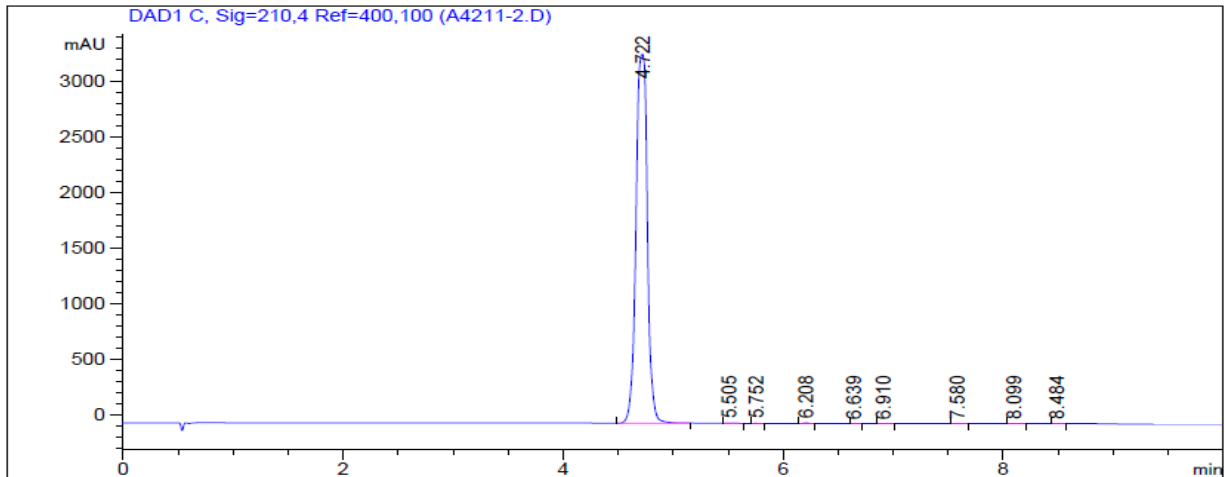
## 1. Analysis Information

Product Name:	Lenalidomide (CC-5013)
Operator:	David
Injection Date:	7/29/2016 1:13:12 AM
Batch No.:	2

## 2. HPLC Condition

Column:	Athena C18, 3 $\mu$ m, 2.1mm $\times$ 100 mm																			
Solvent A:	0.1% H3PO4 in 100% Acetonitrile																			
Solvent B:	0.1% H3PO4 in 100% Water																			
Gradient:	<table border="1"><thead><tr><th>Time</th><th>A</th><th>B</th></tr></thead><tbody><tr><td>0.0min</td><td>0%</td><td>100%</td></tr><tr><td>2.0min</td><td>0%</td><td>100%</td></tr><tr><td>7.0min</td><td>95%</td><td>5%</td></tr><tr><td>10.0min</td><td>95%</td><td>5%</td></tr><tr><td>10.0min</td><td>Stop</td><td>Stop</td></tr></tbody></table>		Time	A	B	0.0min	0%	100%	2.0min	0%	100%	7.0min	95%	5%	10.0min	95%	5%	10.0min	Stop	Stop
Time	A	B																		
0.0min	0%	100%																		
2.0min	0%	100%																		
7.0min	95%	5%																		
10.0min	95%	5%																		
10.0min	Stop	Stop																		
Flow rate:	0.5ml/min																			
Wavelength:	210nm																			
Volume:	3.0 $\mu$ l																			

## 3. Result



Rank	RetTime(min)	Area(mAU*s)	Area %
1	4.722	2.38110e4	99.8382
2	5.505	7.18494	0.0301
3	5.752	2.81907	0.0118
4	6.208	16.74815	0.0702
5	6.639	1.35514	5.682e-3
6	6.910	2.42831	0.0102
7	7.580	2.73391	0.0115
8	8.099	3.70515	0.0155
9	8.484	1.61801	6.784e-3