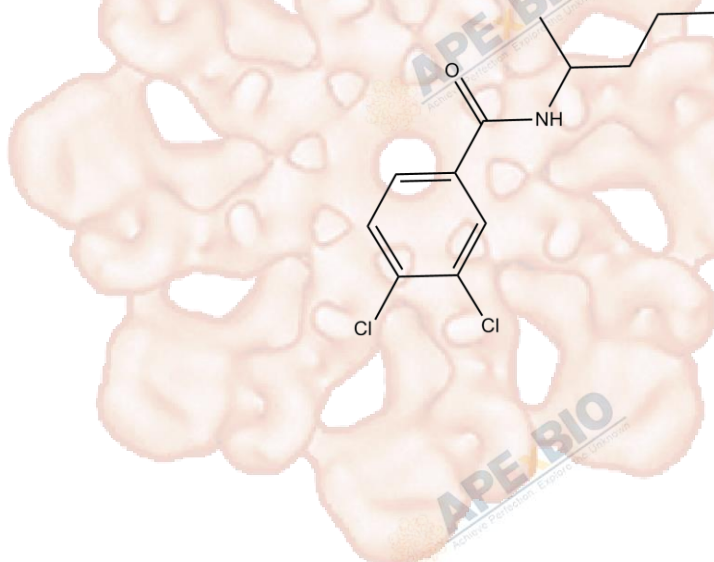


# Product Data Sheet

## NSC 405020

<b>Cat. No.:</b>	A4051
<b>CAS No.:</b>	7497-07-6
<b>Formula:</b>	C <sub>12</sub> H <sub>15</sub> Cl <sub>2</sub> NO
<b>M.Wt:</b>	260.16
<b>Synonyms:</b>	NSC405020, NSC-405020
<b>Target:</b>	Proteases
<b>Pathway:</b>	MMP
<b>Storage:</b>	Store at RT



## Solvent & Solubility

 insoluble in H<sub>2</sub>O; ≥11.4 mg/mL in DMSO; ≥96.4 mg/mL in EtOH

In Vitro

	Solvent	Mass Concentration	1mg	5mg	10mg
Preparing Stock Solutions		1 mM	3.8438 mL	19.2189 mL	38.4379 mL
		5 mM	0.7688 mL	3.8438 mL	7.6876 mL
		10 mM	0.3844 mL	1.9219 mL	3.8438 mL

Please refer to the solubility information to select the appropriate solvent.

## Biological Activity

Shortsummary

MT1-MMP inhibitor

 IC<sub>50</sub> & Target

&gt; 100 μM (MT1-MMP)

In Vitro

### Cell Viability Assay

Preparation method:

In Vivo

### Animal experiment

Applications:

## Product Citations



1. El Azzouzi K, Wiesner C, Linder S. "Metalloproteinase MT1-MMP islets act as memory devices for podosome reemergence." J Cell Biol. 2016 Apr 11;213(1):109-25.PMID:27069022

See more customer validations on [www.apexbt.com](http://www.apexbt.com).

## References

## Caution

**FOR RESEARCH PURPOSES ONLY.**

**NOT FOR HUMAN, VETERINARY DIAGNOSTIC OR THERAPEUTIC USE.**

Specific storage and handling information for each product is indicated on the product datasheet. Most APExBIO products are stable under the recommended conditions. Products are sometimes shipped at a temperature that differs from the recommended storage temperature. Shortterm storage of many products are stable in the short-term at temperatures that differ from that required for long-term storage. We ensure that the product is shipped under conditions that will maintain the quality of the reagents. Upon receipt of the product, follow the storage recommendations on the product data sheet.

**APExBIO Technology**

**[www.apexbt.com](http://www.apexbt.com)**

7505 Fannin street, Suite 410, Houston, TX 77054.

Tel: +1-832-696-8203 | Fax: +1-832-641-3177 | Email: [info@apexbt.com](mailto:info@apexbt.com)

