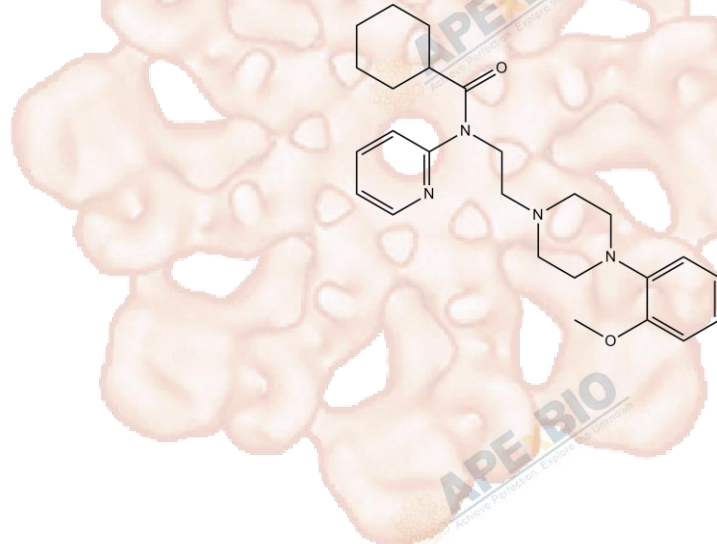


# Product Data Sheet

## WAY-100635

<b>Cat. No.:</b>	A3933
<b>CAS No.:</b>	162760-96-5
<b>Formula:</b>	C <sub>25</sub> H <sub>34</sub> N <sub>4</sub> O <sub>2</sub>
<b>M.Wt:</b>	422.56
<b>Synonyms:</b>	WAY 100635; WAY100635
<b>Target:</b>	Neuroscience
<b>Pathway:</b>	5-HT Receptor
<b>Storage:</b>	Store at -20°C



### Solvent & Solubility

≥42.3 mg/mL in DMSO; insoluble in H<sub>2</sub>O; ≥134.2 mg/mL in EtOH

In Vitro

Preparing Stock Solutions	Solvent	Mass		
		1mg	5mg	10mg
	<b>Concentration</b>			
	<b>1 mM</b>	2.3665 mL	11.8326 mL	23.6653 mL
	<b>5 mM</b>	0.4733 mL	2.3665 mL	4.7331 mL
	<b>10 mM</b>	0.2367 mL	1.1833 mL	2.3665 mL

Please refer to the solubility information to select the appropriate solvent.

### Biological Activity

**Shortsummary** 5-HT<sub>1A</sub> receptor antagonist, potent and selective

**IC<sub>50</sub> & Target** 2.2 nM (5-HT<sub>1A</sub> receptor)

In Vitro

#### Cell Viability Assay

Preparation method:

In Vivo

#### Animal experiment

Applications:

### Product Citations

See more customer validations on [www.apexbt.com](http://www.apexbt.com).

## References

## Caution

**FOR RESEARCH PURPOSES ONLY.**

**NOT FOR HUMAN, VETERINARY DIAGNOSTIC OR THERAPEUTIC USE.**

*Specific storage and handling information for each product is indicated on the product datasheet. Most APEX BIO products are stable under the recommended conditions. Products are sometimes shipped at a temperature that differs from the recommended storage temperature. Shortterm storage of many products are stable in the short-term at temperatures that differ from that required for long-term storage. We ensure that the product is shipped under conditions that will maintain the quality of the reagents. Upon receipt of the product, follow the storage recommendations on the product data sheet.*

**APEX BIO Technology**

**[www.apexbt.com](http://www.apexbt.com)**

7505 Fannin street, Suite 410, Houston, TX 77054.

Tel: +1-832-696-8203 | Fax: +1-832-641-3177 | Email: [info@apexbt.com](mailto:info@apexbt.com)

