

## Certificate of Analysis

Product Name: SU5416

Cat. No.: A3847

Batch No.: 2

### Physical and Chemical Properties

Batch Molecular Formula: C<sub>15</sub>H<sub>14</sub>N<sub>2</sub>O

Batch Molecular Weight: 238.28

Purity: >98%

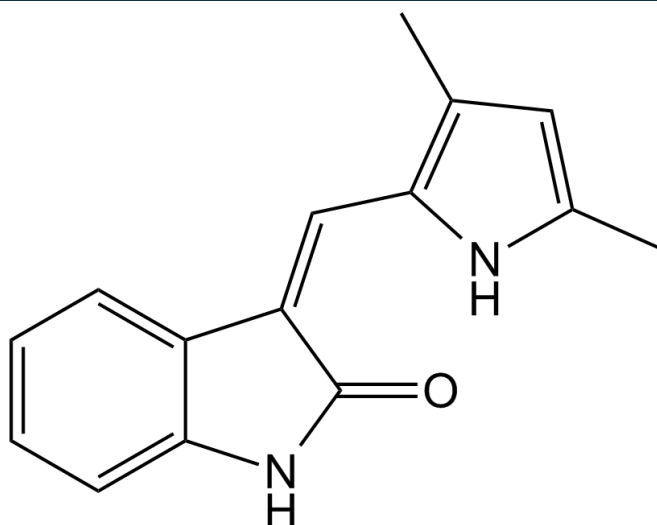
Cas No.: 204005-46-9

### Analytical Data

HPLC: HPLC

Mass Spectrum: Consistent with structure

### Structure



Caution

**FOR RESEARCH PURPOSES ONLY.**

**NOT FOR HUMAN, VETERINARY DIAGNOSTIC OR THERAPEUTIC USE.**

**APEX BIO Technology**

**[www.apexbt.com](http://www.apexbt.com)**

7505 Fannin Street, Suite 410, Houston, TX 77054.

Tel: +1-832-696-8203 | Fax: +1-832-641-3177 | Email: [info@apexbt.com](mailto:info@apexbt.com)