

Certificate of Analysis

Product Name: Solasodine

Cat. No.: A3832

Batch No.: 1

Physical and Chemical Properties

Batch Molecular Formula: C₂₇H₄₃NO₂

Batch Molecular Weight: 413.64

Purity: >98%

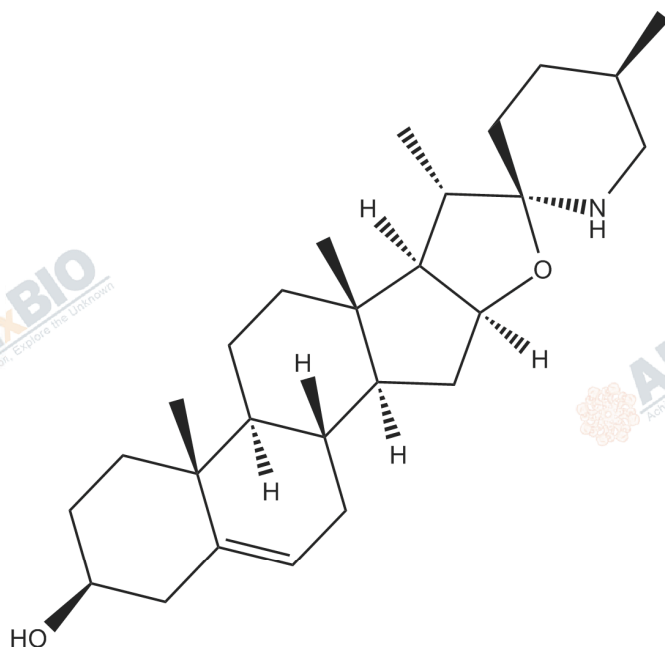
Cas No.: 126-17-0

Analytical Data

HPLC: HPLC

Mass Spectrum: Consistent with structure

Structure



Caution

FOR RESEARCH PURPOSES ONLY.

NOT FOR HUMAN, VETERINARY DIAGNOSTIC OR THERAPEUTIC USE.

APEX BIO Technology

www.apexbt.com

7505 Fannin street, Suite 410, Houston, TX 77054.

Tel: +1-832-696-8203 | Fax: +1-832-641-3177 | Email: info@apexbt.com