

High Performance Liquid Chromatography

Analysis Information

Product Name: Ruxolitinib phosphate
Operator: David
Injection Date: 2/25/2019 11:08:46 PM
Batch No.: 1

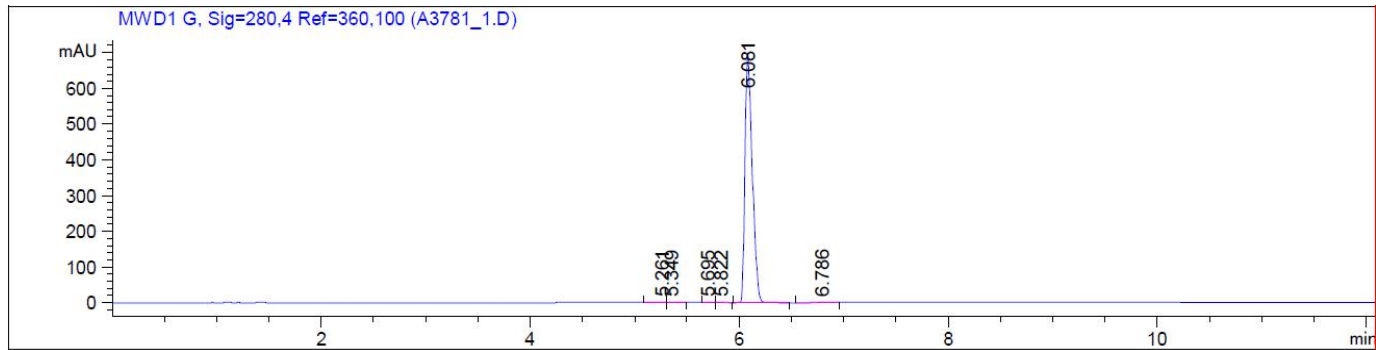
HPLC Condition

Column : ZORBAX Eclipse Pluse C18 3.5 μ m 4.6mmx100mm
Solvent A: H2O+0.1%TFA
Solvent B: ACN+0.1%TFA
Gradient:

Time	A	B
0.0min	95%	5%
2.0min	95%	5%
7.0min	5%	95%
10.00min	0%	100%
12.00min	0%	100%
12.10min	95%	5%
15.00min	Stop	Stop

Flow rate: 1mL/min
Wavelength: 280nm
Volume: 3 μ l

Result



Rank	RetTime(min)	Area(mAU*s)	Area %
1	5.261	1.78878	0.0528
2	5.349	2.25947	0.0667
3	5.695	1.00123	0.0296
4	5.822	1.31908	0.0389
5	6.081	3378.88232	99.7335
6	6.786	3378.88232	0.0785

Caution

FOR RESEARCH PURPOSES ONLY.

NOT FOR HUMAN, VETERINARY DIAGNOSTIC OR THERAPEUTIC USE.

APEX BIO Technology

www.apexbt.com

7505 Fannin street, Suite 410, Houston, TX 77054.

Tel: +1-832-696-8203 | Fax: +1-832-641-3177 | Email: info@apexbt.com