



# High Performance Liquid Chromatography

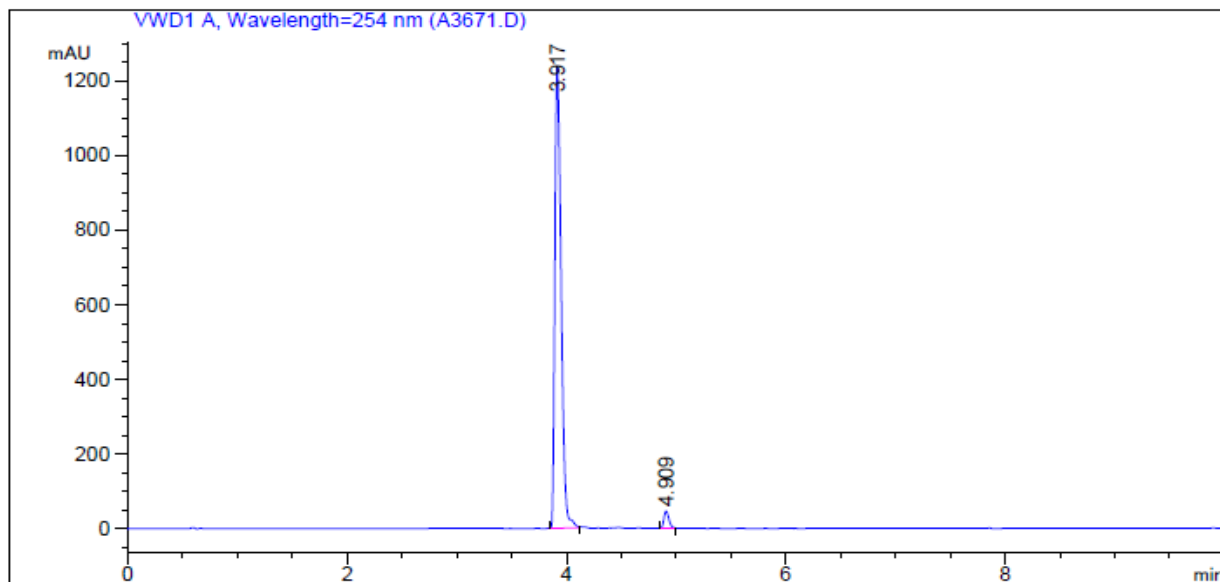
## 1. Analysis Information

Product Name:	Nutlin-3a chiral
Operator:	David
Injection Date:	7/24/2014 1:27:30 PM
Batch No.:	1

## 2. HPLC Condition

Column:	Athena C18, 3 $\mu$ m, 2.1mm $\times$ 100 mm																						
Solvent A:	0.1% H <sub>3</sub> PO <sub>4</sub> in 100% Acetonitrile																						
Solvent B:	0.1% H <sub>3</sub> PO <sub>4</sub> in 100% Water																						
Gradient:	<table border="1"><thead><tr><th>Time</th><th>A</th><th>B</th></tr></thead><tbody><tr><td>0.0min</td><td>10%</td><td>90%</td></tr><tr><td>3.5min</td><td>95%</td><td>5%</td></tr><tr><td>8.0min</td><td>95%</td><td>5%</td></tr><tr><td>9.0min</td><td>10%</td><td>90%</td></tr><tr><td>10.0min</td><td>10%</td><td>90%</td></tr><tr><td>10.0min</td><td>Stop</td><td>Stop</td></tr></tbody></table>		Time	A	B	0.0min	10%	90%	3.5min	95%	5%	8.0min	95%	5%	9.0min	10%	90%	10.0min	10%	90%	10.0min	Stop	Stop
Time	A	B																					
0.0min	10%	90%																					
3.5min	95%	5%																					
8.0min	95%	5%																					
9.0min	10%	90%																					
10.0min	10%	90%																					
10.0min	Stop	Stop																					
Flow rate:	0.4ml/min																						
Wavelength:	254nm																						
Volume:	10 $\mu$ l																						

## 3. Result



Rank	RetTime(min)	Area(mAU*s)	Area %
1	3.917	4933.53857	97.1109
2	4.909	146.77771	2.8891