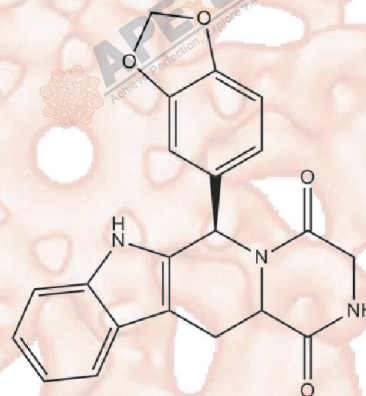


Product Data Sheet

Nortadalafil

Cat. No.:	A3665
CAS No.:	171596-36-4
Formula:	C ₂₁ H ₁₇ N ₃ O ₄
M.Wt:	375.38
Synonyms:	Demethyl Tadalafil
Target:	Metabolism
Pathway:	PDE
Storage:	Store at -20°C



Solvent & Solubility

≥32.7 mg/mL in DMSO; ≥2.32 mg/mL in EtOH with ultrasonic; insoluble in H₂O

In Vitro

	Solvent	Mass Concentration	1mg	5mg	10mg
Preparing Stock Solutions		1 mM	2.6640 mL	13.3198 mL	26.6397 mL
		5 mM	0.5328 mL	2.6640 mL	5.3279 mL
		10 mM	0.2664 mL	1.3320 mL	2.6640 mL

Please refer to the solubility information to select the appropriate solvent.

Biological Activity

Shortsummary

PDE5 inhibitor

IC₅₀ & Target

In Vitro

Cell Viability Assay

Preparation method:

In Vivo

Animal experiment

Applications:

Product Citations

See more customer validations on www.apexbt.com.

References

Caution

FOR RESEARCH PURPOSES ONLY.

NOT FOR HUMAN, VETERINARY DIAGNOSTIC OR THERAPEUTIC USE.

Specific storage and handling information for each product is indicated on the product datasheet. Most APEX BIO products are stable under the recommended conditions. Products are sometimes shipped at a temperature that differs from the recommended storage temperature. Short-term storage of many products are stable in the short-term at temperatures that differ from that required for long-term storage. We ensure that the product is shipped under conditions that will maintain the quality of the reagents. Upon receipt of the product, follow the storage recommendations on the product data sheet.

APEX BIO Technology

www.apexbt.com

7505 Fannin street, Suite 410, Houston, TX 77054.

Tel: +1-832-696-8203 | Fax: +1-832-641-3177 | Email: info@apexbt.com