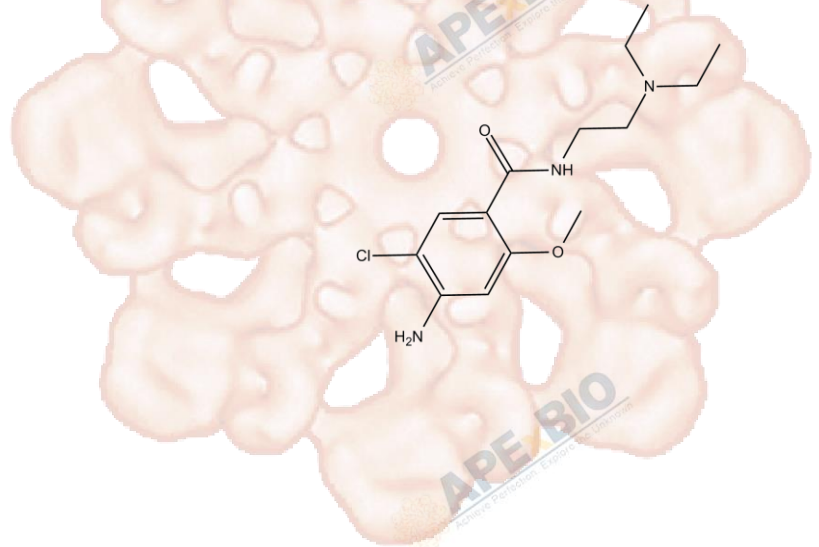


Product Data Sheet

Metoclopramide

Cat. No.: A3599
CAS No.: 364-62-5
Formula: C₁₄H₂₂ClN₃O₂
M.Wt: 299.8
Synonyms:
Target: Neuroscience
Pathway: Dopamine Receptor
Storage: Store at -20°C



Solvent & Solubility

insoluble in H₂O; ≥14.99 mg/mL in DMSO; ≥24.6 mg/mL in EtOH with gentle warming

In Vitro

Preparing Stock Solutions	Solvent	Mass		
		1mg	5mg	10mg
	Concentration			
	1 mM	3.3356 mL	16.6778 mL	33.3556 mL
	5 mM	0.6671 mL	3.3356 mL	6.6711 mL
	10 mM	0.3336 mL	1.6678 mL	3.3356 mL

Please refer to the solubility information to select the appropriate solvent.

Biological Activity

Shortsummary

Dopamine receptor antagonist

IC₅₀ & Target

In Vitro

Cell Viability Assay

Preparation method:

In Vivo

Animal experiment

Applications:

Product Citations

See more customer validations on www.apexbt.com.

References

Caution

FOR RESEARCH PURPOSES ONLY.

NOT FOR HUMAN, VETERINARY DIAGNOSTIC OR THERAPEUTIC USE.

Specific storage and handling information for each product is indicated on the product datasheet. Most APEX BIO products are stable under the recommended conditions. Products are sometimes shipped at a temperature that differs from the recommended storage temperature. Shortterm storage of many products are stable in the short-term at temperatures that differ from that required for long-term storage. We ensure that the product is shipped under conditions that will maintain the quality of the reagents. Upon receipt of the product, follow the storage recommendations on the product data sheet.

APEX BIO Technology

www.apexbt.com

7505 Fannin street, Suite 410, Houston, TX 77054.

Tel: +1-832-696-8203 | Fax: +1-832-641-3177 | Email: info@apexbt.com

