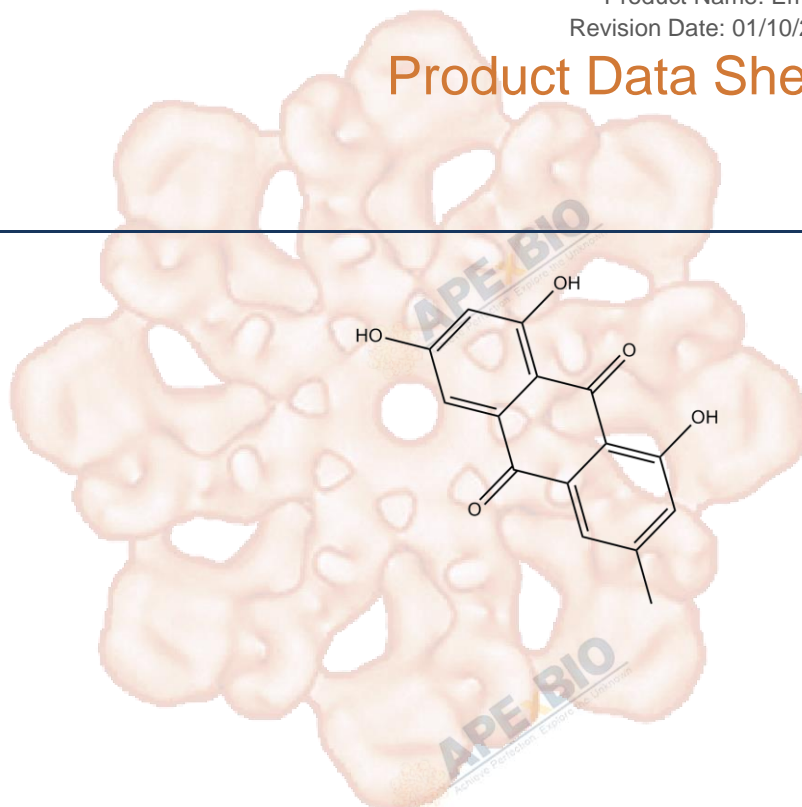


Product Data Sheet

Emodin

Cat. No.:	A3392
CAS No.:	518-82-1
Formula:	C ₁₅ H ₁₀ O ₅
M.Wt:	270.24
Synonyms:	Emodol;Frangula emodin
Target:	Immunology/Inflammation
Pathway:	NF-κB
Storage:	Store at -20°C



Solvent & Solubility

≥27 mg/mL in DMSO; insoluble in H₂O; insoluble in EtOH

In Vitro

	Solvent	Mass Concentration	Mass		
			1mg	5mg	10mg
Preparing Stock Solutions		1 mM	3.7004 mL	18.5021 mL	37.0041 mL
		5 mM	0.7401 mL	3.7004 mL	7.4008 mL
		10 mM	0.3700 mL	1.8502 mL	3.7004 mL

Please refer to the solubility information to select the appropriate solvent.

Biological Activity

Shortsummary

Naturally occurring anthraquinone,antiproliferative

IC₅₀ & Target

In Vitro

Cell Viability Assay

Cell Line:	Epithelial ovarian cancer (EOC) cells
Preparation method:	The solubility of this compound in DMSO is > 10 mM. General tips for obtaining a higher concentration: Please warm the tube at 37 °C for 10 minutes and/or shake it in the ultrasonic bath for a while. Stock solution can be stored below - 20 °C for several months.
Reacting conditions:	0 ~ 80 μM; 48 hrs

	Applications:	In a series of EOC cells, Emodin inhibited cell proliferation in a dose-dependent manner. Emodin at the dose of 20 μ M abrogated the migration and invasion abilities of A2780 and SK-OV-3 cells transfected with pLVX-ILK. The results of western blotting analysis implied that Emodin inhibited the migration and invasion abilities of EOC cells by blocking epithelial-mesenchymal transition (EMT) through targeting integrin-linked kinase (ILK).
In Vivo	Animal experiment	
	Animal models:	Nude mice bearing SK-OV-3/pLVX-ILK cells
	Dosage form:	50 mg/kg/d; i.p.; for 21 days
	Applications:	In nude mice bearing SK-OV-3/pLVX-ILK cells, Emodin significantly inhibited tumor growth. Meanwhile, Emodin counteracted the effects of over-expression of ILK on EOC cells. The immunohistochemical results demonstrated that Emodin inhibited the EMT of tumor cells. In addition, Emodin exhibited mild cardiac, liver and renal toxicities in vivo.
	Other notes:	Please test the solubility of all compounds indoor, and the actual solubility may slightly differ with the theoretical value. This is caused by an experimental system error and it is normal.

Product Citations

See more customer validations on www.apexbt.com.

References

[1]. Lu J, Xu Y, Zhao Z, Ke X, Wei X, Kang J, Zong X, Mao H, Liu P. Emodin suppresses proliferation, migration and invasion in ovarian cancer cells by down regulating ILK in vitro and in vivo. *Onco Targets Ther.* 2017 Jul 19;10:3579-3589.

Caution

FOR RESEARCH PURPOSES ONLY.

NOT FOR HUMAN, VETERINARY DIAGNOSTIC OR THERAPEUTIC USE.

Specific storage and handling information for each product is indicated on the product datasheet. Most APEX BIO products are stable under the recommended conditions. Products are sometimes shipped at a temperature that differs from the recommended storage temperature. Shortterm storage of many products are stable in the short-term at temperatures that differ from that required for long-term storage. We ensure that the product is shipped under conditions that will maintain the quality of the reagents. Upon receipt of the product, follow the storage recommendations on the product data sheet.

APEx BIO Technology

www.apexbt.com

7505 Fannin street, Suite 410, Houston, TX 77054.

Tel: +1-832-696-8203 | Fax: +1-832-641-3177 | Email: info@apexbt.com

