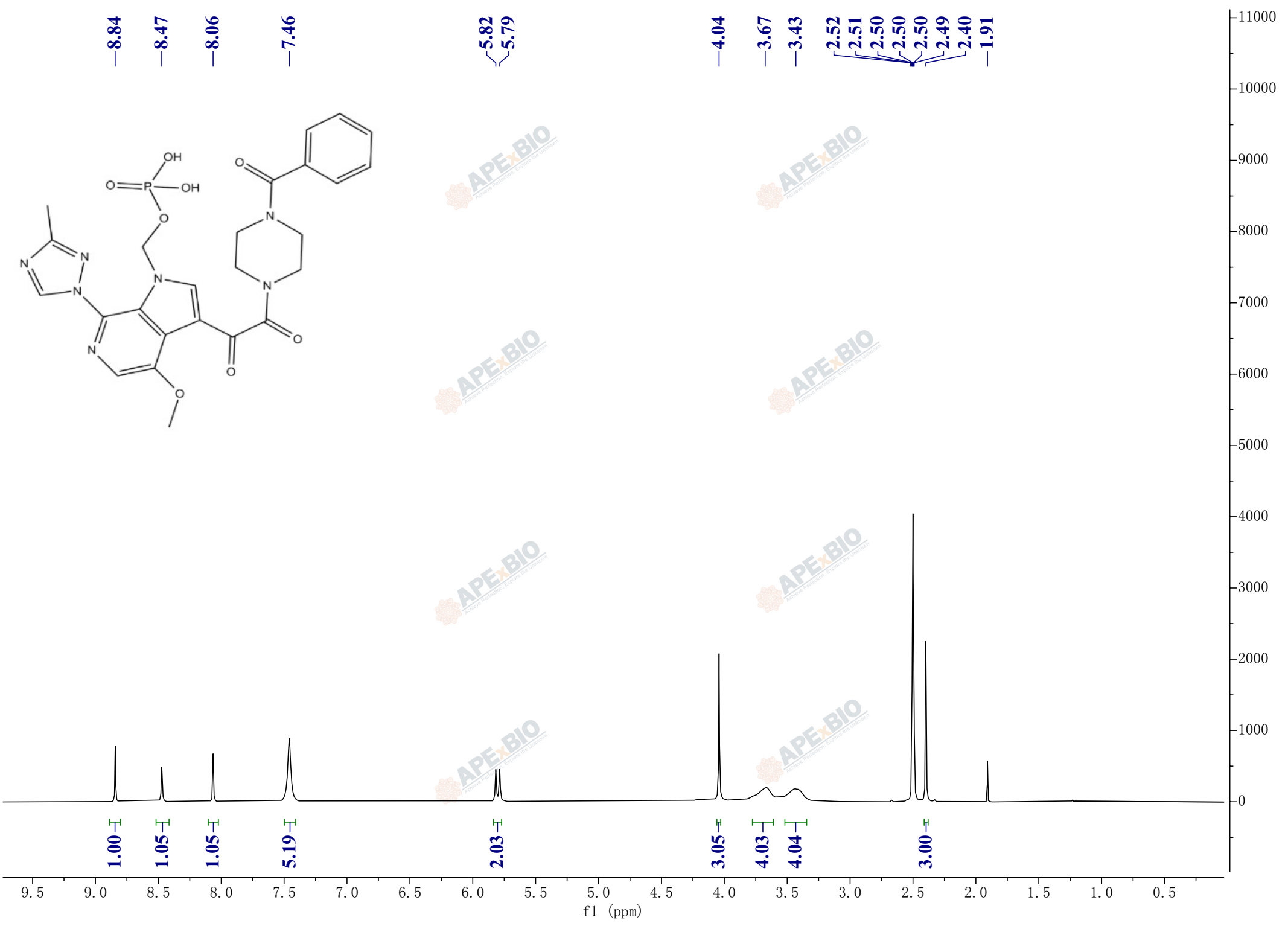


—8.84
—8.47
—8.06
—7.46

5.82
5.79

—4.04
—3.67
—3.43
2.52
2.51
2.50
2.50
2.50
2.49
2.40
—1.91



APEX-BIO
 APEX-BIO
 APEX-BIO
 APEX-BIO
 APEX-BIO
 APEX-BIO