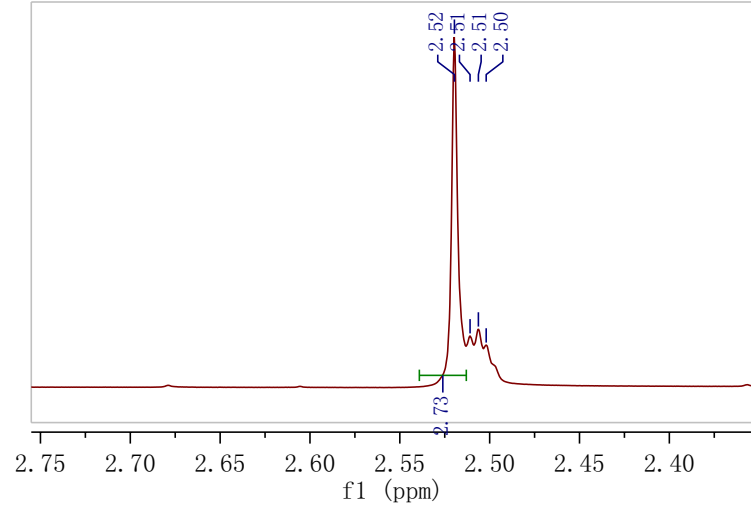


8.53  
8.01  
7.99  
7.99  
7.98  
7.96  
7.86  
7.62  
7.60

3.35

2.52  
2.51  
2.51  
2.50



0.92

1.90

1.00

2.73

10.5 10.0 9.5 9.0 8.5 8.0 7.5 7.0 6.5 6.0 5.5 5.0 4.5 4.0 3.5 3.0 2.5 2.0 1.5 1.0 0.5 0.0

f1 (ppm)

Detailed description: This is the full NMR spectrum from 0.0 to 10.5 ppm. The x-axis is labeled 'f1 (ppm)'. The spectrum shows several distinct signals: a sharp peak at ~8.5 ppm (integration 0.92), a multiplet between 7.5-8.0 ppm (integration 1.90), a multiplet at ~7.6 ppm (integration 1.00), a peak at ~3.35 ppm, a very large peak at ~2.51 ppm (integration 2.73), and a small peak at ~0.0 ppm. The baseline is flat elsewhere.