

— 9.89

— 8.23

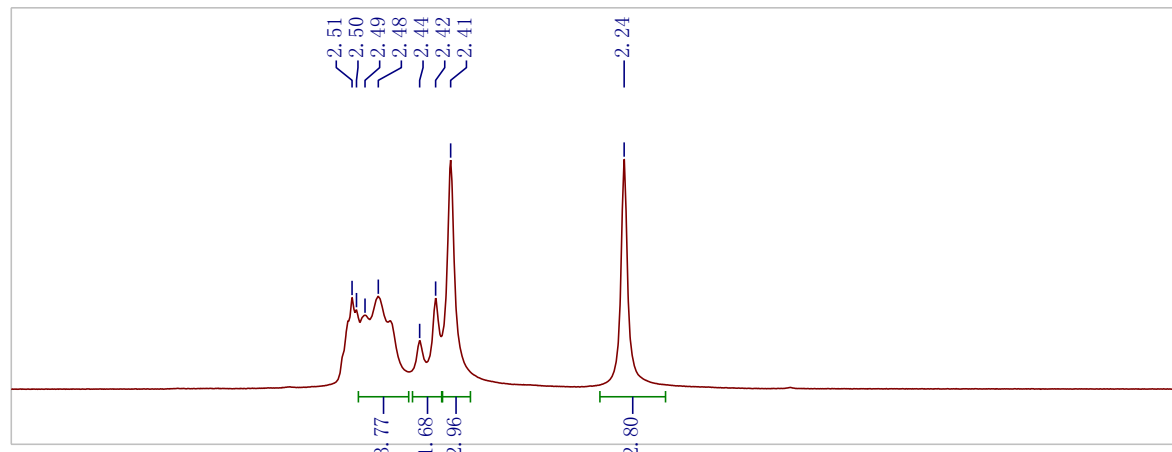
7.41
7.40
7.30
7.29
7.28
7.26
7.24

— 6.05

4.48
4.47
4.46

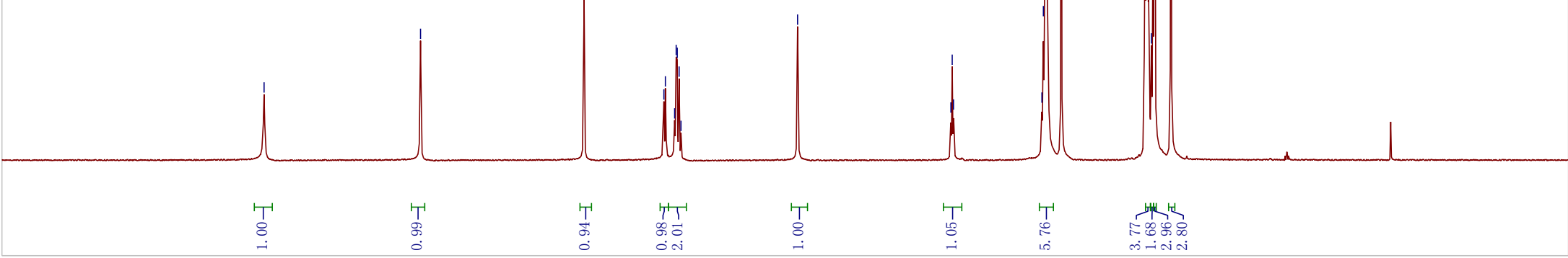
3.56
3.54
3.53
3.51
3.36

2.51
2.50
2.49
2.48
2.44
2.42
2.41



2.8 2.7 2.6 2.5 2.4 2.3 2.2 2.1 2.0 1.9 1.8

f1 (ppm)



14 13 12 11 10 9 8 7 6 5 4 3 2 1 0 -1

f1 (ppm)