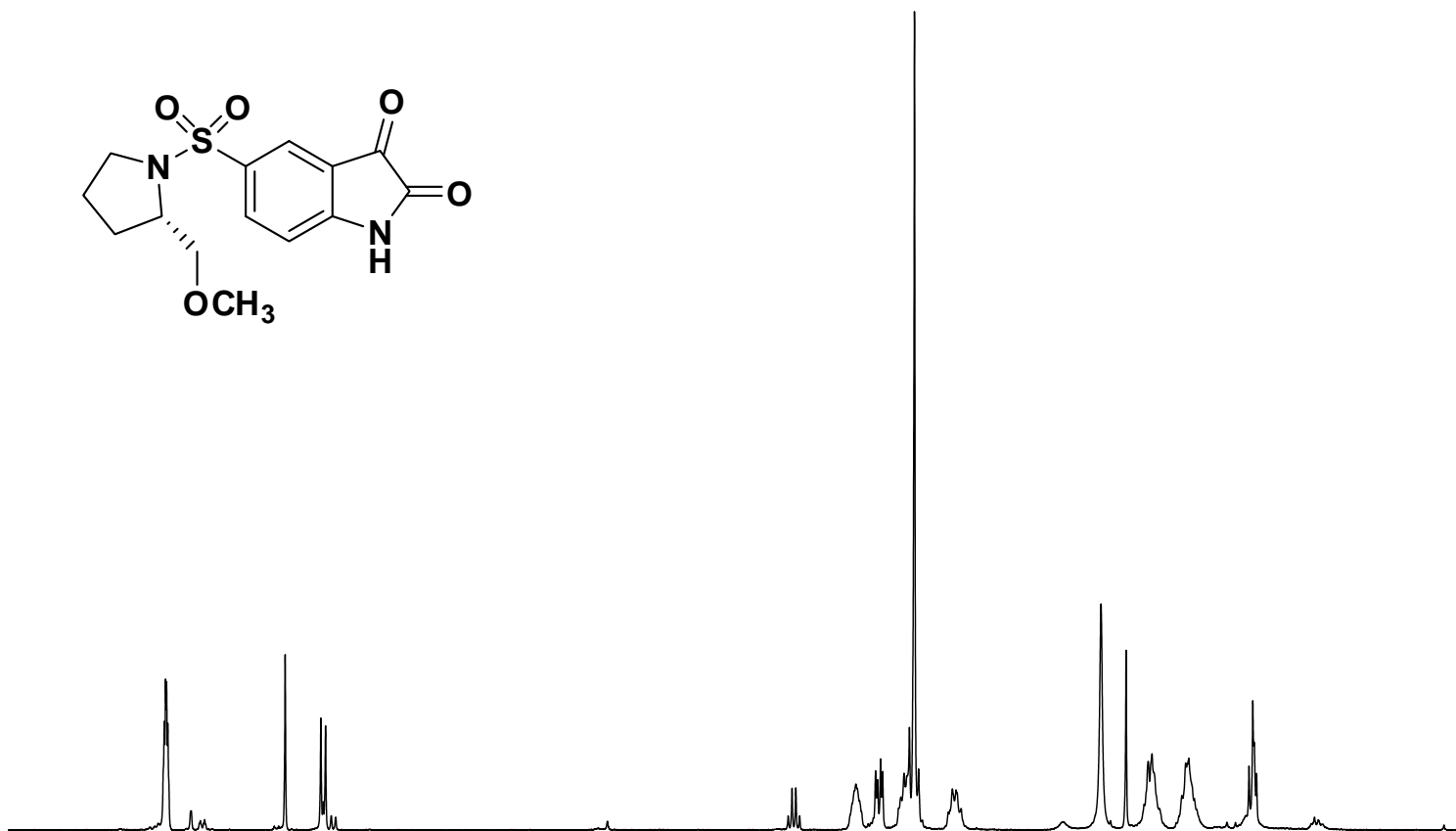
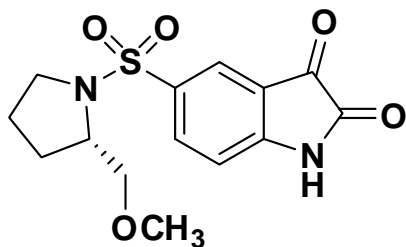


8.024
8.015
8.009
8.001
7.270
7.048
7.018

3.713
3.690
3.591
3.578
3.559
3.546
3.433
3.413
3.380
3.348
3.322
3.137
3.112
3.088
3.057
1.916
1.891
1.867
1.681
1.658
1.648
1.638
1.604



8.5 8.0 7.5 7.0 6.5 6.0 5.5 5.0 4.5 4.0 3.5 3.0 2.5 2.0 1.5 1.0 ppm

1.60

0.81

1.03

1.00

5.32

1.07

2.11

2.07

```

NAME      Caspase-3/7 Inhibitor I
EXPNO     1
PROCNO    1
Date_     20130717
Time_     17.47
INSTRUM   spect
PROBHD    5 mm PABBO BB-
PULPROG   zg30
TD         32768
SOLVENT   CDC13
NS         16
DS         2
SWH        6009.615 Hz
FIDRES     0.183399 Hz
AQ         2.7263477 sec
RG         287
DW         83.200 usec
DE         6.50 usec
TE         298.0 K
D1         1.00000000 sec
D10        1
TD0        1
    
```

```

===== CHANNEL f1 =====
SFO1      300.1324010 MHz
NUC1       1H
P1         12.90 usec
SI         65536
SF         300.1300041 MHz
WDW        EM
SSB        0
LB         0.30 Hz
GB         0
PC         1.00
    
```