

High Performance Liquid Chromatography

Analysis Information

Product Name: Glycoprotein B (485-492)
Operator: David
Injection Date: 2/16/2019 11:03:56 PM
Batch No.: 1

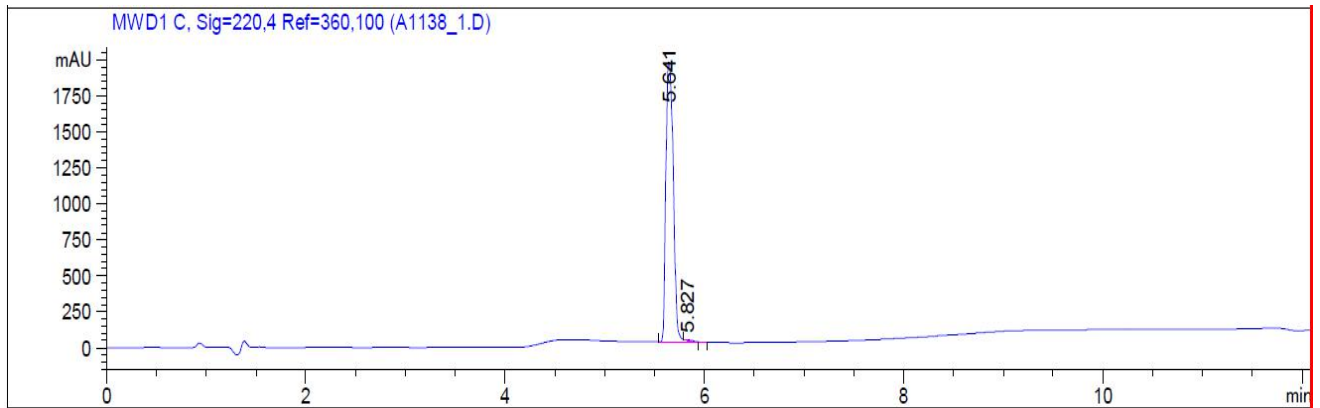
HPLC Condition

Column : ZORBAX Eclipse Pluse C18 3.5 μ m 4.6mmx100mm
Solvent A: H2O+0.1%TFA
Solvent B: ACN+0.1%TFA
Gradient:

| Time | A | B |
|----------|------|------|
| 0.0min | 95% | 5% |
| 2.0min | 95% | 5% |
| 7.0min | 5% | 95% |
| 10.00min | 0% | 100% |
| 12.00min | 0% | 100% |
| 12.10min | 95% | 5% |
| 15.00min | Stop | Stop |

Flow rate: 1mL/min
Wavelength: 220nm
Volume: 10 μ l

Result



| Rank | RetTime(min) | Area(mAU*s) | Area % |
|------|--------------|-------------|---------|
| 1 | 5.641 | 1.00731e4 | 99.6177 |
| 2 | 5.827 | 38.65957 | 0.3823 |

Caution

FOR RESEARCH PURPOSES ONLY.

NOT FOR HUMAN, VETERINARY DIAGNOSTIC OR THERAPEUTIC USE.

APEX BIO Technology

www.apexbt.com

7505 Fannin street, Suite 410, Houston, TX 77054.

Tel: +1-832-696-8203 | Fax: +1-832-641-3177 | Email: info@apexbt.com