

## Mass Spectrometry

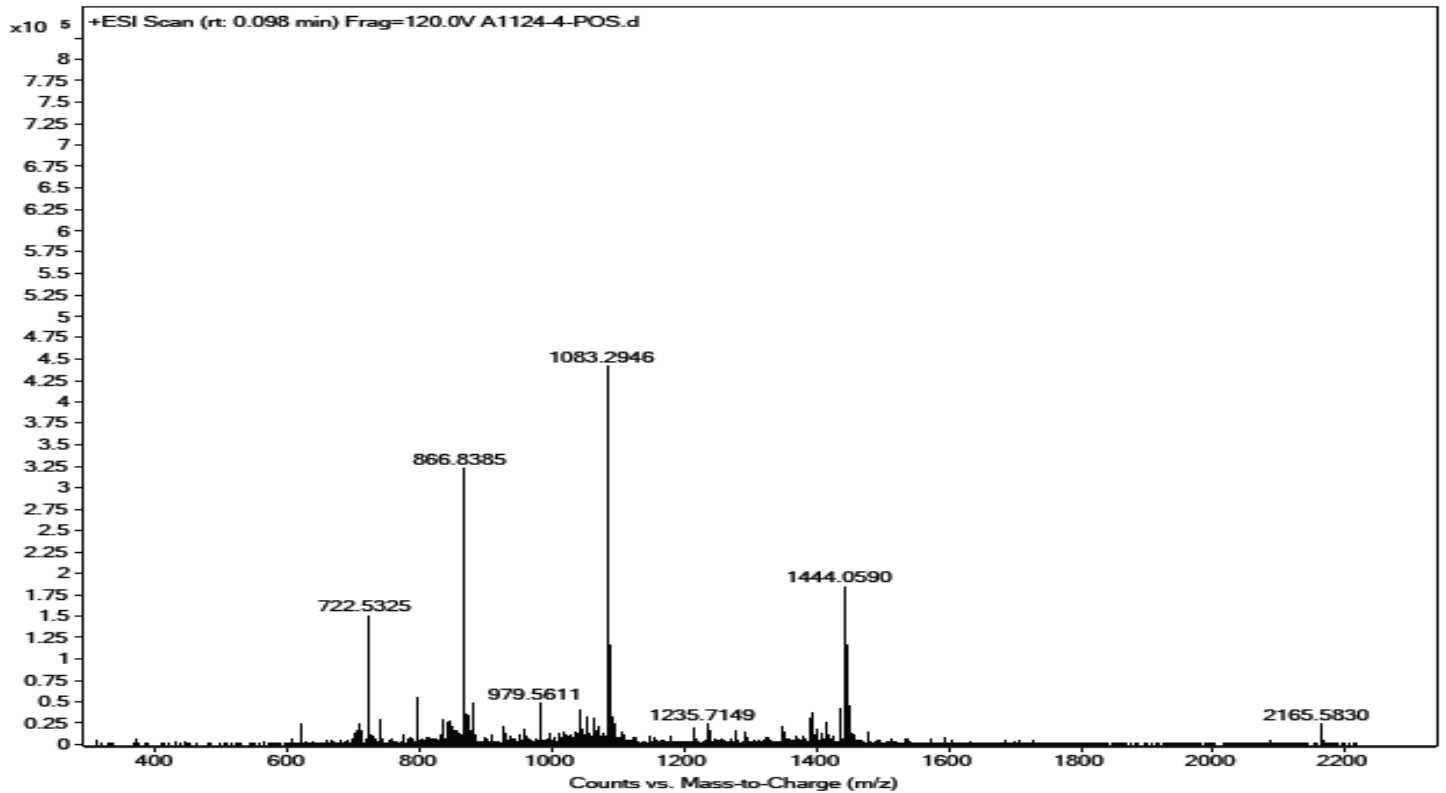
### Analysis Information

<b>Product Name:</b>	Amyloid Beta-Peptide (1-40) (human)
<b>Operator:</b>	David
<b>Injection Date:</b>	7/8/2019 10:43:48 AM
<b>Inj. Volume:</b>	1
<b>Batch No.:</b>	4

### Acquisition Parameter

<b>Probe:</b>	ESI
<b>Gas Temp:</b>	350°C
<b>Gas Flow:</b>	11L/min
<b>Nebulizer:</b>	50psi
<b>VCap:</b>	4000v
<b>Fragmentor:</b>	70v
<b>Reference:</b>	m/z 121.050873, 922.009798
<b>T.Flow:</b>	0.3ml/min
<b>B.conc:</b>	20%H <sub>2</sub> O/80%ACN

## Result



Molecular Weight:	4329.86
m/z([M+3H]3+) Base Peak:	1444.0590
m/z([M+4H]4+) Base Peak:	1083.2946
m/z([M+5H]5+) Base Peak:	866.8385

## Caution

**FOR RESEARCH PURPOSES ONLY.**

**NOT FOR HUMAN, VETERINARY DIAGNOSTIC OR THERAPEUTIC USE.**

[www.apexbt.com](http://www.apexbt.com)

7505 Fannin street, Suite 410, Houston, TX 77054.

Tel: +1-832-696-8203 | Fax: +1-832-641-3177 | Email: [info@apexbt.com](mailto:info@apexbt.com)