

# High Performance Liquid Chromatography

## Analysis Information

**Product Name:** Large T antigen - rhesus polyomavirus 560-568  
**Operator:** David  
**Injection Date:** 2/16/2019 1:56:43 PM  
**Batch No.:** 1

## HPLC Condition

**Column :** ZORBAX Eclipse Pluse C18 3.5 $\mu$ m 4.6mmx100mm  
**Solvent A:** H2O+0.1%TFA  
**Solvent B:** ACN+0.1%TFA  
**Gradient:**

Time	A	B
0.0min	95%	5%
2.0min	95%	5%
7.0min	5%	95%
10.00min	0%	100%
12.00min	0%	100%
12.10min	95%	5%
15.00min	Stop	Stop

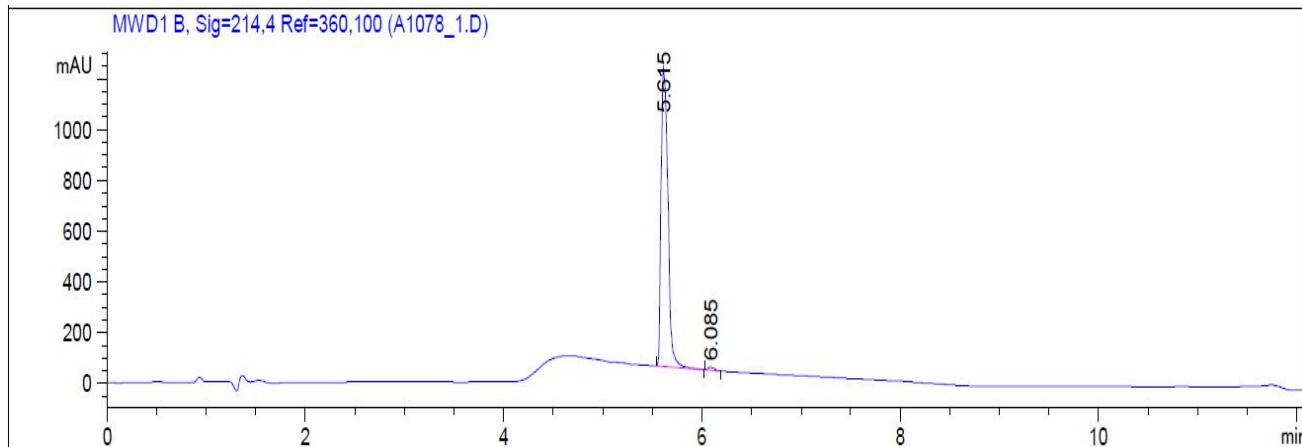
**Flow rate:** 1mL/min

**Wavelength:** 214nm

Volume:

10µl

## Result



Rank	RetTime(min)	Area(mAU*s)	Area %
1	5.615	5711.72852	99.0828
2	6.085	52.87057	0.9172

## Caution

**FOR RESEARCH PURPOSES ONLY.**

**NOT FOR HUMAN, VETERINARY DIAGNOSTIC OR THERAPEUTIC USE.**

**APEX BIO Technology**

**[www.apexbt.com](http://www.apexbt.com)**

7505 Fannin street, Suite 410, Houston, TX 77054.

Tel: +1-832-696-8203 | Fax: +1-832-641-3177 | Email: [info@apexbt.com](mailto:info@apexbt.com)