

## Mass Spectrometry

### Analysis Information

<b>Product Name:</b>	Amyloid Peptide (25-35) (human)
<b>Operator:</b>	David
<b>Injection Date:</b>	9/10/2018 8:08:26 PM
<b>Inj. Volume:</b>	1
<b>Batch No.:</b>	1

### Acquisition Parameter

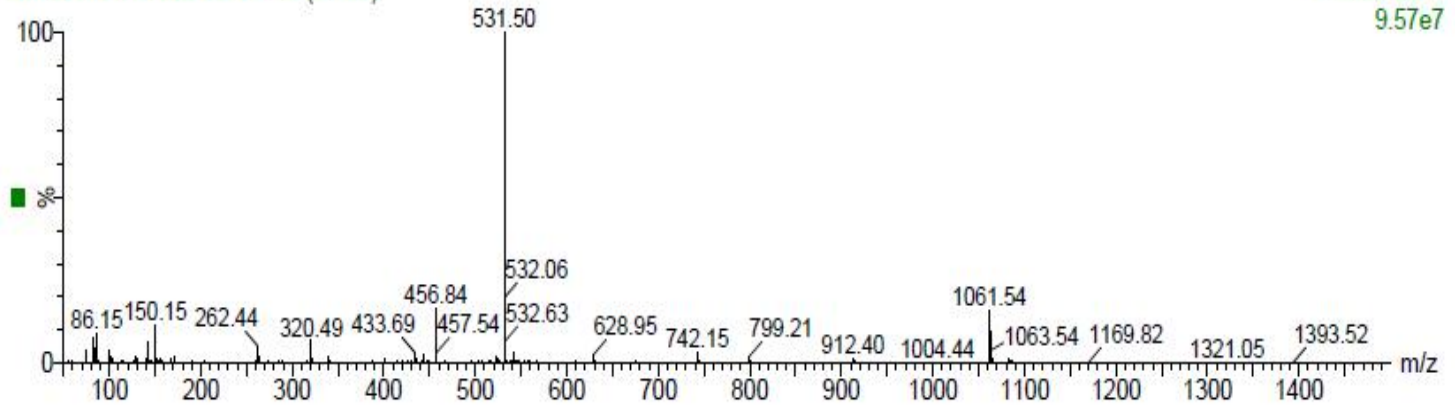
<b>Probe:</b>	ESI
<b>Gas Temp:</b>	350°C
<b>Gas Flow:</b>	11L/min
<b>Nebulizer:</b>	50psi
<b>VCap:</b>	4000v
<b>Fragmentor:</b>	70v
<b>Reference:</b>	m/z 121.050873, 922.009798
<b>T.Flow:</b>	0.3ml/min
<b>B.conc:</b>	20%H2O/80%ACN

# Result

NT-S20180910-005

20180910-131602-53-4-F 10 (0.165)

1: Scan ES+  
9.57e7



**Molecular Weight:** 1060.27

**m/z([M+H]<sup>+</sup>) Base Peak:** 1061.54

**m/z([M+2H]<sup>2+</sup>) Base Peak:** 531.50

## Caution

**FOR RESEARCH PURPOSES ONLY.**

**NOT FOR HUMAN, VETERINARY DIAGNOSTIC OR THERAPEUTIC USE.**

**APEX BIO Technology**

[www.apexbt.com](http://www.apexbt.com)

7505 Fannin street, Suite 410, Houston, TX 77054.

Tel: +1-832-696-8203 | Fax: +1-832-641-3177 | Email: [info@apexbt.com](mailto:info@apexbt.com)