

## Mass Spectrometry

### Analysis Information

<b>Product Name:</b>	Amyloid Peptide (25-35) (human)
<b>Operator:</b>	David
<b>Injection Date:</b>	10/12/2018 10:00:50 AM
<b>Inj. Volume:</b>	1
<b>Batch No.:</b>	2

### Acquisition Parameter

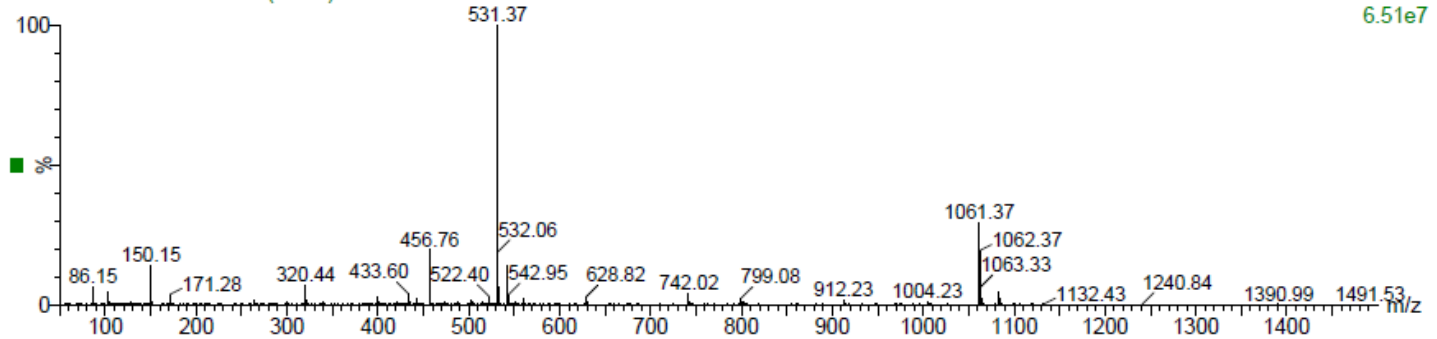
<b>Probe:</b>	ESI
<b>Gas Temp:</b>	350°C
<b>Gas Flow:</b>	11L/min
<b>Nebulizer:</b>	50psi
<b>VCap:</b>	4000v
<b>Fragmentor:</b>	70v
<b>Reference:</b>	m/z 121.050873, 922.009798
<b>T.Flow:</b>	0.3ml/min
<b>B.conc:</b>	20%H <sub>2</sub> O/80%ACN

## Result

NT-S20181012-004

20181012-131602-53-4 11 (0.182)

1: Scan ES+  
6.51e7



**Molecular Weight:** 1060.27

**m/z(M+H) Base Peak:** 1061.37

## Caution

**FOR RESEARCH PURPOSES ONLY.**

**NOT FOR HUMAN, VETERINARY DIAGNOSTIC OR THERAPEUTIC USE.**

**APEX BIO Technology**

[www.apexbt.com](http://www.apexbt.com)

7505 Fannin street, Suite 410, Houston, TX 77054.

Tel: +1-832-696-8203 | Fax: +1-832-641-3177 | Email: [info@apexbt.com](mailto:info@apexbt.com)