

## Mass Spectrometry

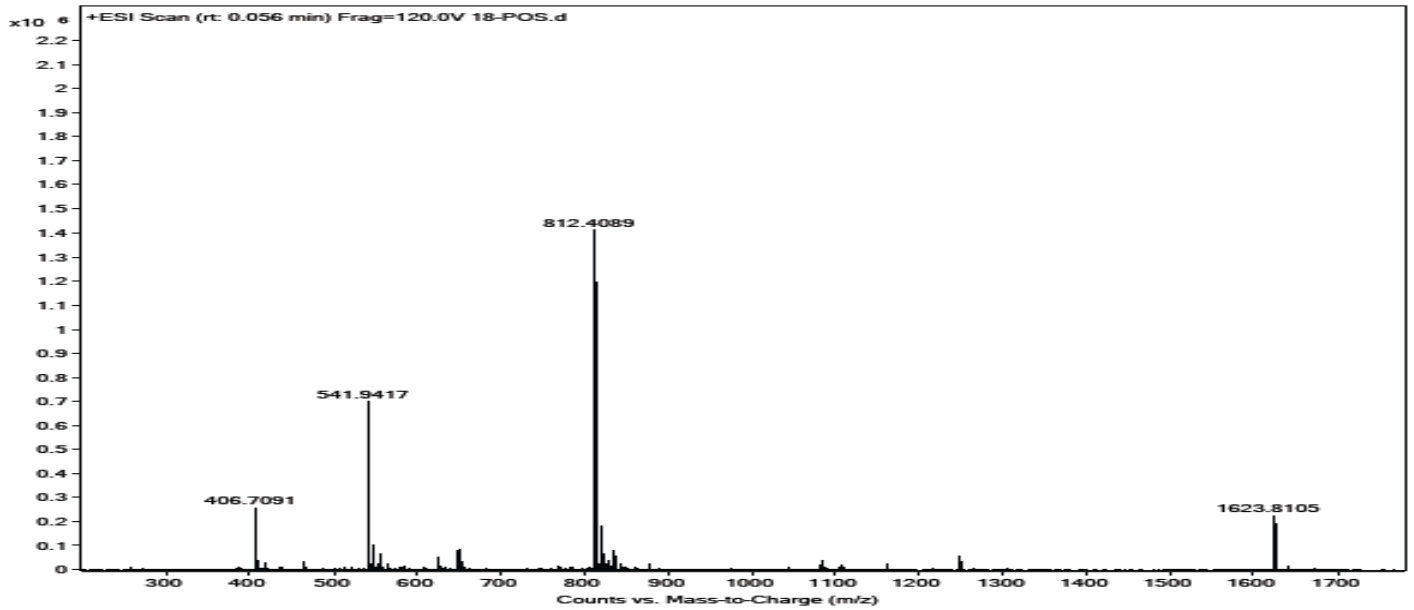
### Analysis Information

<b>Product Name:</b>	GTP-Binding Protein Fragment, G alpha
<b>Operator:</b>	David
<b>Injection Date:</b>	2/25/2019 11:43:04 AM
<b>Inj. Volume:</b>	1
<b>Batch No.:</b>	1

### Acquisition Parameter

<b>Probe:</b>	ESI
<b>Gas Temp:</b>	350°C
<b>Gas Flow:</b>	11L/min
<b>Nebulizer:</b>	50psi
<b>VCap:</b>	4000v
<b>Fragmentor:</b>	70v
<b>Reference:</b>	m/z 121.050873, 922.009798
<b>T.Flow:</b>	0.3ml/min
<b>B.conc:</b>	20%H2O/80%ACN

## Result



Molecular Weight: 1623.89

m/z([M-2H]<sup>2-</sup>) Base Peak: 812.4089

m/z([M-3H]<sup>3-</sup>) Base Peak: 541.9417

## Caution

**FOR RESEARCH PURPOSES ONLY.**

**NOT FOR HUMAN, VETERINARY DIAGNOSTIC OR THERAPEUTIC USE.**

**APEX BIO Technology**

[www.apexbt.com](http://www.apexbt.com)

7505 Fannin street, Suite 410, Houston, TX 77054.

Tel: +1-832-696-8203 | Fax: +1-832-641-3177 | Email: [info@apexbt.com](mailto:info@apexbt.com)