

## Mass Spectrometry

### Analysis Information

**Product Name:** GnRH Associated Peptide (1-13), human

**Operator:** David

**Injection Date:** 9/18/2020 9:22:53 PM

**Inj. Volume:** 1

**Batch No.:** 1

### Acquisition Parameter

**Probe:** ESI

**Gas Temp:** 350°C

**Gas Flow:** 11L/min

**Nebulizer:** 50psi

**VCap:** 4000v

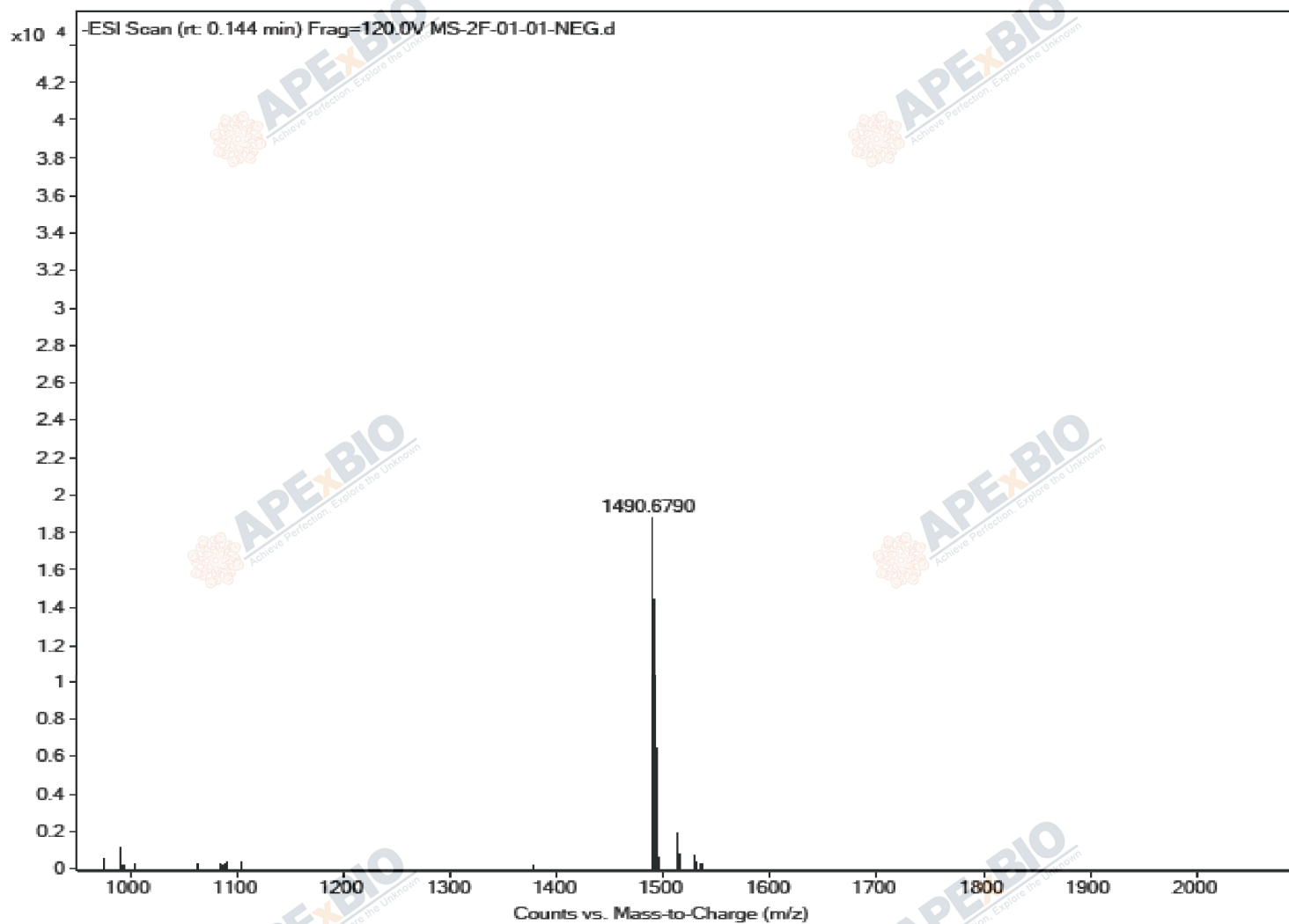
**Fragmentor:** 70v

**Reference:** m/z 121.050873, 922.009798

**T.Flow:** 0.3ml/min

**B.conc:** 20%H2O/80%ACN

## Result



Molecular Weight: 1492.58

m/z([M-2H]-) Base Peak: 1490.6790

## Caution

**FOR RESEARCH PURPOSES ONLY.**

**NOT FOR HUMAN, VETERINARY DIAGNOSTIC OR THERAPEUTIC USE.**

[www.apexbt.com](http://www.apexbt.com)

7505 Fannin street, Suite 410, Houston, TX 77054.

Tel: +1-832-696-8203 | Fax: +1-832-641-3177 | Email: [info@apexbt.com](mailto:info@apexbt.com)

