

## Mass Spectrometry

### Analysis Information

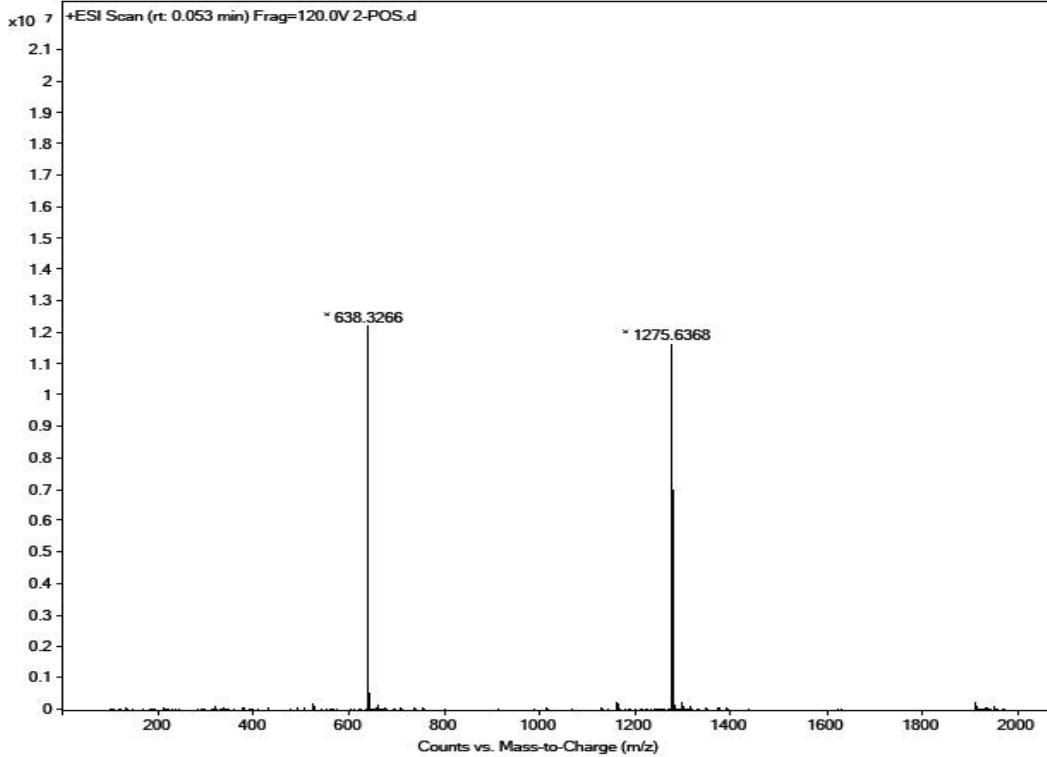
<b>Product Name:</b>	Beta-Sheet Breaker Peptide iA $\beta$ 5
<b>Operator:</b>	David
<b>Injection Date:</b>	3/12/2019 11:25:36 AM
<b>Inj. Volume:</b>	1
<b>Batch No.:</b>	1

### Acquisition Parameter

<b>Probe:</b>	ESI
<b>Gas Temp:</b>	350°C
<b>Gas Flow:</b>	11L/min
<b>Nebulizer:</b>	50psi
<b>VCap:</b>	4000v
<b>Fragmentor:</b>	70v
<b>Reference:</b>	m/z 121.050873, 922.009798
<b>T.Flow:</b>	0.3ml/min
<b>B.conc:</b>	20%H <sub>2</sub> O/80%ACN

# Result

Sample Name	F 5	Position	P2-B2	Instrument Name	Instrument 1
User Name		Inj Vol	Unknown / Injection Program	InjPosition	
Sample Type	Sample	IRM Calibration Status	Success	Data Filename	2-POS.d
ACQ Method	20190215-HPLC-POS.m	Comment		Acquired Time	3/12/2019 11:25:36 AM (UTC+08:00)



Molecular Weight: 637.73

m/z([M+H]<sup>+</sup>) Base Peak: 638.3266

## Caution

**FOR RESEARCH PURPOSES ONLY.**

**NOT FOR HUMAN, VETERINARY DIAGNOSTIC OR THERAPEUTIC USE.**

**APExBIO Technology**

**[www.apexbt.com](http://www.apexbt.com)**

7505 Fannin street, Suite 410, Houston, TX 77054.

Tel: +1-832-696-8203 | Fax: +1-832-641-3177 | Email: [info@apexbt.com](mailto:info@apexbt.com)