

# High Performance Liquid Chromatography

## 1. Analysis Information

Product Name:	Rosarin
Operator:	David
Injection Date:	9/19/2017 5:31:33 PM
Batch No.:	2

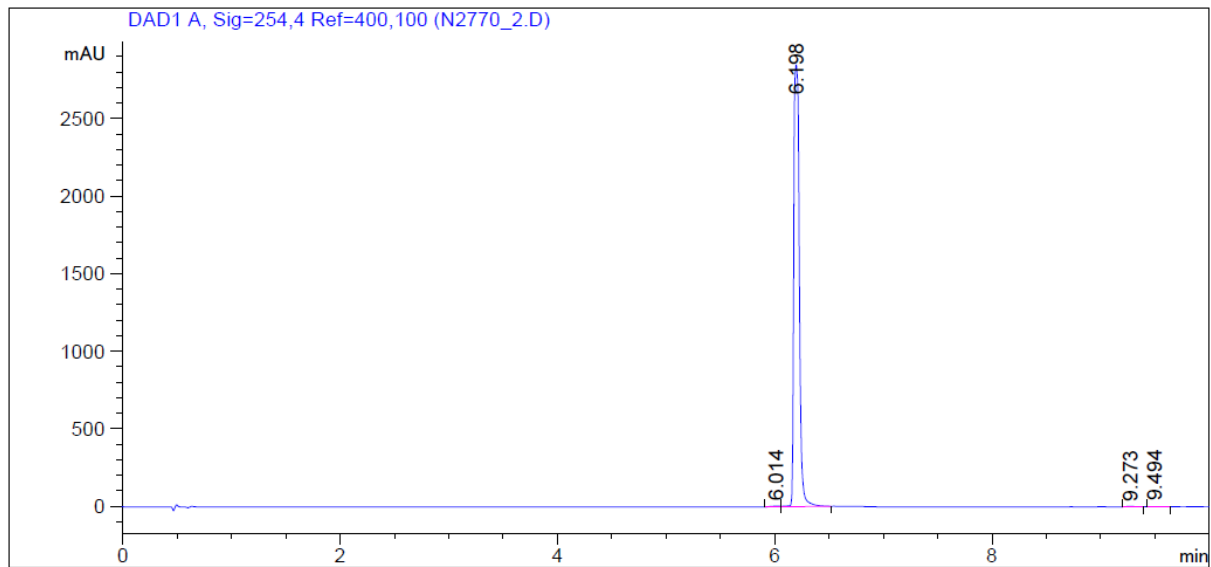
## 2. HPLC Condition

Column:	Athena C18, 3 $\mu$ m, 2.1mm $\times$ 100 mm
Solvent A:	0.1% H3PO4 in 100% Acetonitrile
Solvent B:	0.1% H3PO4 in 100% Water

Gradient:	Time	A	B
	0.0min	0%	100%
	2.0min	0%	100%
	7.0min	95%	5%
	10.0 min	95%	5%
	10.0min	Stop	Stop

Flow rate:	0.45ml/min
Wavelength:	254nm
Volume:	10 $\mu$ l

## 3. Result



Rank	RetTime(min)	Area(mAU*s)	Area %
1	6.014	25.02507	0.2476
2	6.198	1.00667e4	99.5833
3	9.273	8.87893	0.0878
4	9.494	8.21575	0.0813