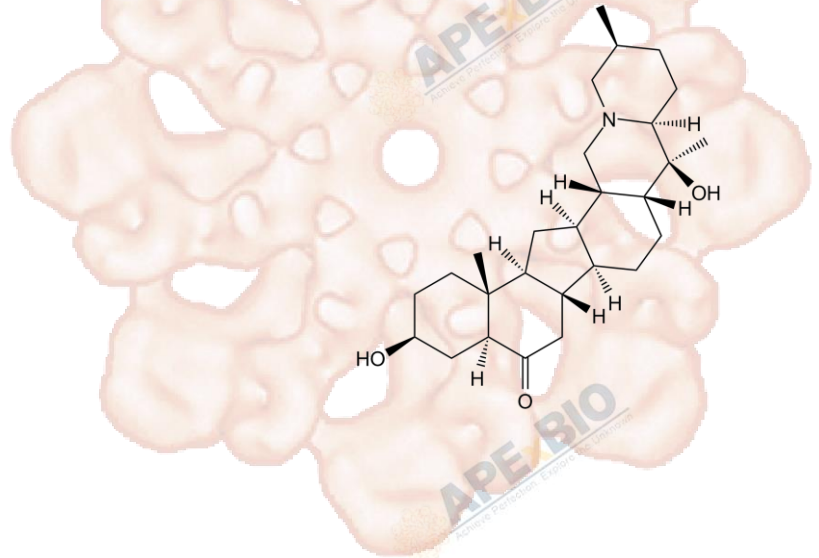


Product Data Sheet

Sipeimine

Cat. No.:	N2485
CAS No.:	61825-98-7
Formula:	C ₂₇ H ₄₃ NO ₃
M.Wt:	429.64
Synonyms:	
Target:	Natural Products
Pathway:	
Storage:	Store at -20°C



Solvent & Solubility

≥21.5 mg/mL in DMSO with gentle warming and ultrasonic; insoluble in H₂O; ≥2.58 mg/mL in EtOH with gentle warming

In Vitro

Preparing Stock Solutions	Solvent Concentration	Mass		
		1mg	5mg	10mg
	1 mM	2.3275 mL	11.6377 mL	23.2753 mL
	5 mM	0.4655 mL	2.3275 mL	4.6551 mL
	10 mM	0.2328 mL	1.1638 mL	2.3275 mL

Please refer to the solubility information to select the appropriate solvent.

Biological Activity

Shortsummary

IC₅₀ & Target

In Vitro

Cell Viability Assay

Preparation method:

In Vivo

Animal experiment

Applications:

Product Citations

See more customer validations on www.apexbt.com.

References

Caution

FOR RESEARCH PURPOSES ONLY.

NOT FOR HUMAN, VETERINARY DIAGNOSTIC OR THERAPEUTIC USE.

Specific storage and handling information for each product is indicated on the product datasheet. Most APExBIO products are stable under the recommended conditions. Products are sometimes shipped at a temperature that differs from the recommended storage temperature. Short-term storage of many products are stable in the short-term at temperatures that differ from that required for long-term storage. We ensure that the product is shipped under conditions that will maintain the quality of the reagents. Upon receipt of the product, follow the storage recommendations on the product data sheet.

APExBIO Technology

www.apexbt.com

7505 Fannin street, Suite 410, Houston, TX 77054.

Tel: +1-832-696-8203 | Fax: +1-832-641-3177 | Email: info@apexbt.com

