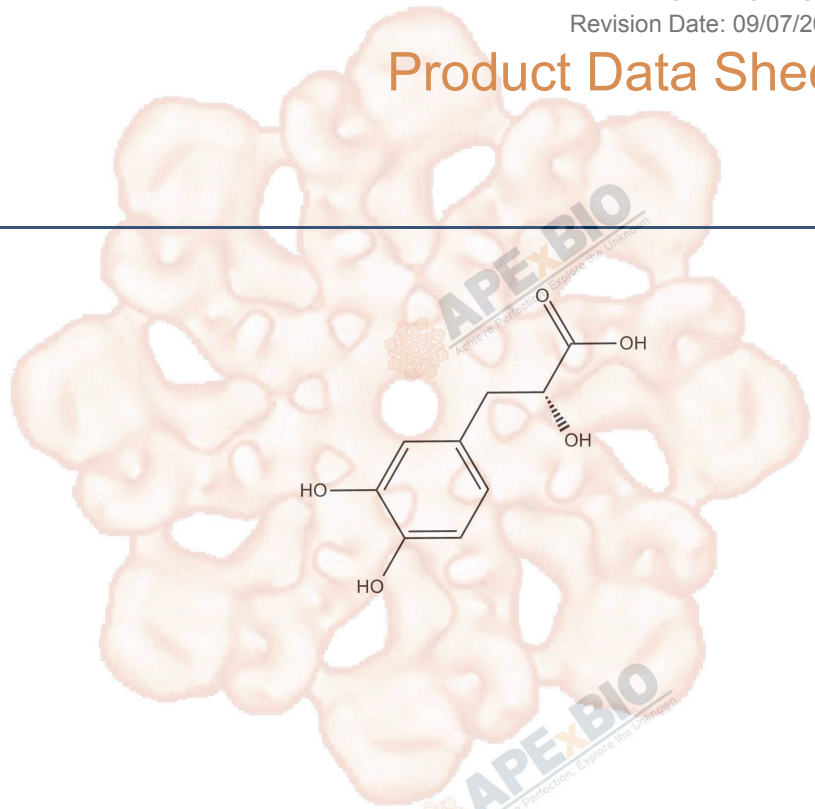


Product Data Sheet

Danshensu

| | |
|------------------|------------------------|
| Cat. No.: | N2431 |
| CAS No.: | 22681-72-7; 76822-21-4 |
| Formula: | C9H10O5 |
| M.Wt: | 198.17 |
| Synonyms: | |
| Target: | Natural Products |
| Pathway: | |
| Storage: | Store at -20°C |



Solvent & Solubility

≥0.93 mg/mL in DMSO with gentle warming and ultrasonic; insoluble in EtOH; ≥4.7 mg/mL in H₂O

| | Solvent | Mass | | | |
|----------|---------------------------|---------------|-----------|------------|------------|
| | | 1mg | 5mg | 10mg | |
| In Vitro | Preparing Stock Solutions | | | | |
| | | Concentration | | | |
| | | 1 mM | 5.0462 mL | 25.2309 mL | 50.4617 mL |
| | | 5 mM | 1.0092 mL | 5.0462 mL | 10.0923 mL |
| | 10 mM | 0.5046 mL | 2.5231 mL | 5.0462 mL | |

Please refer to the solubility information to select the appropriate solvent.

Biological Activity

| | |
|---------------------------|-----------------------------|
| Shortsummary | |
| IC ₅₀ & Target | |
| In Vitro | Cell Viability Assay |
| | Preparation method: |
| In Vivo | Animal experiment |
| | Applications: |

Product Citations

See more customer validations on www.apexbt.com.

References

Caution

FOR RESEARCH PURPOSES ONLY.

NOT FOR HUMAN, VETERINARY DIAGNOSTIC OR THERAPEUTIC USE.

Specific storage and handling information for each product is indicated on the product datasheet. Most APExBIO products are stable under the recommended conditions. Products are sometimes shipped at a temperature that differs from the recommended storage temperature. Shortterm storage of many products are stable in the short-term at temperatures that differ from that required for long-term storage. We ensure that the product is shipped under conditions that will maintain the quality of the reagents. Upon receipt of the product, follow the storage recommendations on the product data sheet.

APExBIO Technology

www.apexbt.com

7505 Fannin street, Suite 410, Houston, TX 77054.

Tel: +1-832-696-8203 | Fax: +1-832-641-3177 | Email: info@apexbt.com

