

# High Performance Liquid Chromatography

## Analysis Information

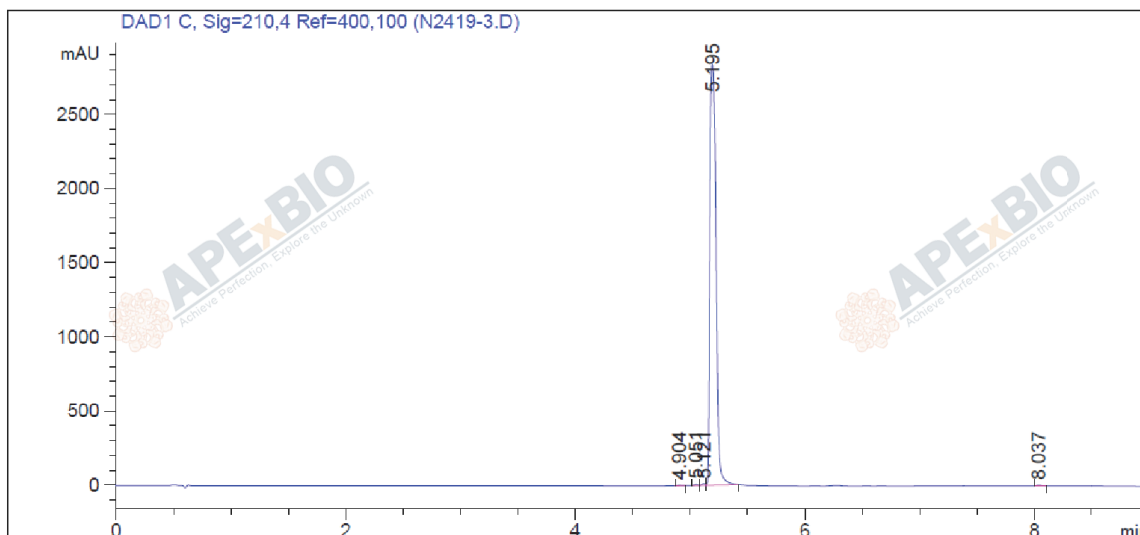
**Product Name:** Phellodendrine  
**Operator:** David  
**Injection Date:** 9/30/2021 11:11:52 AM  
**Batch No.:** 3

## HPLC Condition

**Column :** Athena C18, 3 $\mu$ m, 2.1mm  $\times$  100 mm  
**Solvent A:** ACN+0.1%TFA  
**Solvent B:** H2O+0.1%TFA  
**Gradient:**

Time	A	B
0.0min	0%	100%
1.5min	0%	100%
6.0min	95%	5%
9.0min	95%	5%
9.0min	Stop	Stop

**Flow rate:** 0.46ml/min  
**Wavelength:** 210nm  
**Volume:** 3 $\mu$ l



Rank	RetTime(min)	Area(mAU*s)	Area %
1	4.904	5.46018	0.0513
2	5.051	12.51172	0.1175
3	5.121	24.06638	0.2259
4	5.195	1.05959e4	99.4660
5	8.037	14.85190	0.1394

**Caution**

**FOR RESEARCH PURPOSES ONLY.**

**NOT FOR HUMAN, VETERINARY DIAGNOSTIC OR THERAPEUTIC USE.**

**APEX BIO Technology**

**www.apexbt.com**

7505 Fannin street, Suite 410, Houston, TX 77054.

Tel: +1-832-696-8203 | Fax: +1-832-641-3177 | Email: info@apexbt.com