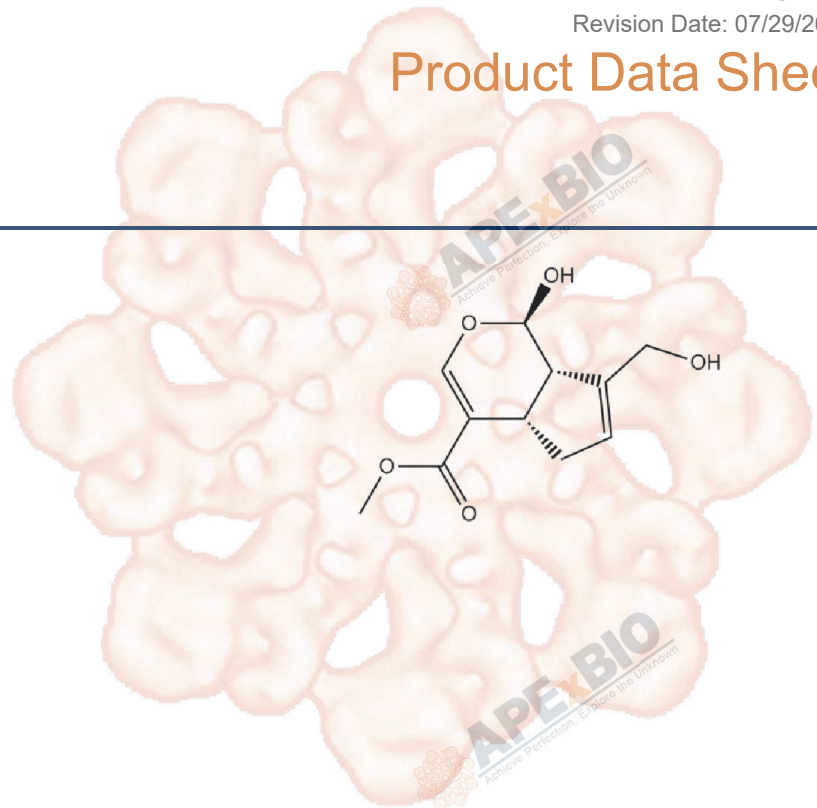


# Product Data Sheet

## Genipin

<b>Cat. No.:</b>	N2408
<b>CAS No.:</b>	6902-77-8
<b>Formula:</b>	C <sub>11</sub> H <sub>14</sub> O <sub>5</sub>
<b>M.Wt:</b>	226.23
<b>Synonyms:</b>	
<b>Target:</b>	Natural Products
<b>Pathway:</b>	
<b>Storage:</b>	Store at -20°C



## Solvent & Solubility

≥101.6 mg/mL in EtOH; ≥5.97 mg/mL in H<sub>2</sub>O; ≥9.8 mg/mL in DMSO

In Vitro	Preparing Stock Solutions	Mass			
		Solvent	1mg	5mg	10mg
			Concentration		
		1 mM	4.4203 mL	22.1014 mL	44.2028 mL
		5 mM	0.8841 mL	4.4203 mL	8.8406 mL
		10 mM	0.4420 mL	2.2101 mL	4.4203 mL

Please refer to the solubility information to select the appropriate solvent.

## Biological Activity

Shortsummary	used to treat symptoms of type 2 diabetes
IC <sub>50</sub> & Target	
In Vitro	<b>Cell Viability Assay</b>
	Preparation method:
In Vivo	<b>Animal experiment</b>
	Applications:

## Product Citations

See more customer validations on [www.apexbt.com](http://www.apexbt.com).

## References

## Caution

**FOR RESEARCH PURPOSES ONLY.**

**NOT FOR HUMAN, VETERINARY DIAGNOSTIC OR THERAPEUTIC USE.**

*Specific storage and handling information for each product is indicated on the product datasheet. Most APEX BIO products are stable under the recommended conditions. Products are sometimes shipped at a temperature that differs from the recommended storage temperature. Short-term storage of many products are stable in the short-term at temperatures that differ from that required for long-term storage. We ensure that the product is shipped under conditions that will maintain the quality of the reagents. Upon receipt of the product, follow the storage recommendations on the product data sheet.*

**APEX BIO Technology**

**[www.apexbt.com](http://www.apexbt.com)**

7505 Fannin Street, Suite 410, Houston, TX 77054.

Tel: +1-832-696-8203 | Fax: +1-832-641-3177 | Email: [info@apexbt.com](mailto:info@apexbt.com)

