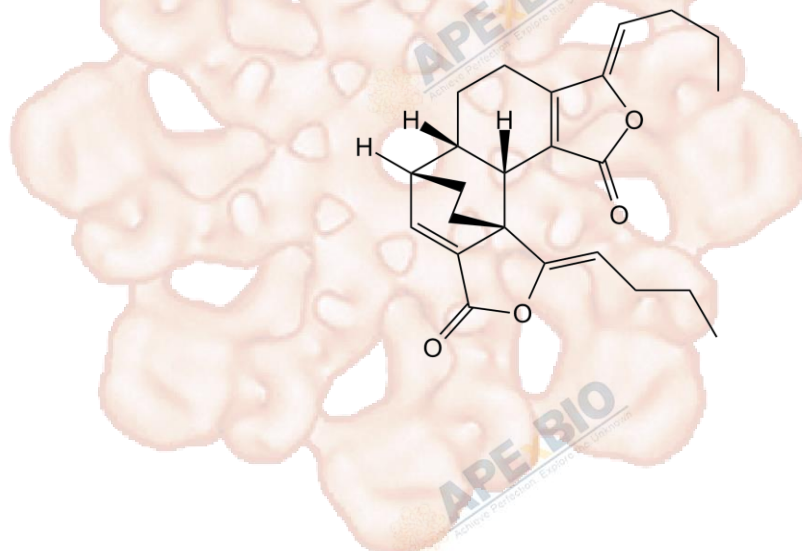


Product Data Sheet

Levistilide A

Cat. No.:	N2235
CAS No.:	88182-33-6
Formula:	C ₂₄ H ₂₈ O ₄
M.Wt:	380
Synonyms:	
Target:	Natural Products
Pathway:	
Storage:	Store at -20°C



Solvent & Solubility

≥38 mg/mL in DMSO; insoluble in H₂O; insoluble in EtOH

In Vitro

Preparing Stock Solutions	Solvent	Mass		
		1mg	5mg	10mg
	Concentration			
	1 mM	2.6316 mL	13.1579 mL	26.3158 mL
	5 mM	0.5263 mL	2.6316 mL	5.2632 mL
	10 mM	0.2632 mL	1.3158 mL	2.6316 mL

Please refer to the solubility information to select the appropriate solvent.

Biological Activity

Shortsummary

IC₅₀ & Target

In Vitro

Cell Viability Assay

Preparation method:

In Vivo

Animal experiment

Applications:

Product Citations

See more customer validations on www.apexbt.com.

References

Caution

FOR RESEARCH PURPOSES ONLY.

NOT FOR HUMAN, VETERINARY DIAGNOSTIC OR THERAPEUTIC USE.

Specific storage and handling information for each product is indicated on the product datasheet. Most APEX BIO products are stable under the recommended conditions. Products are sometimes shipped at a temperature that differs from the recommended storage temperature. Short-term storage of many products are stable in the short-term at temperatures that differ from that required for long-term storage. We ensure that the product is shipped under conditions that will maintain the quality of the reagents. Upon receipt of the product, follow the storage recommendations on the product data sheet.

APEX BIO Technology

www.apexbt.com

7505 Fannin street, Suite 410, Houston, TX 77054.

Tel: +1-832-696-8203 | Fax: +1-832-641-3177 | Email: info@apexbt.com

