

# High Performance Liquid Chromatography

## Analysis Information

**Product Name:** Rhoifolin  
**Operator:** David  
**Injection Date:** 6/10/2019 9:29:27 PM  
**Batch No.:** 2

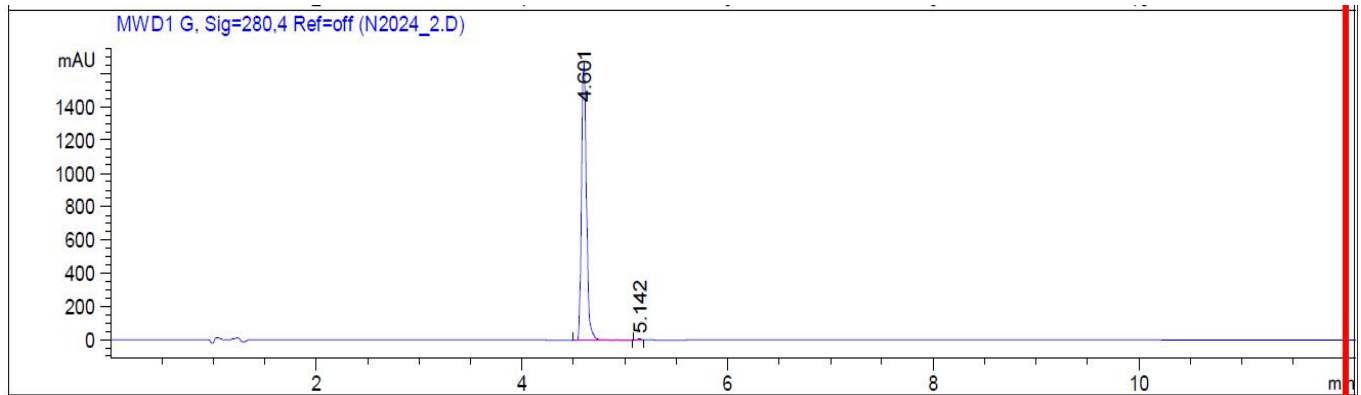
## HPLC Condition

**Column :** ZORBAX Eclipse Pluse C18 3.5 $\mu$ m 4.6mmx100mm  
**Solvent A:** H2O+0.1%TFA  
**Solvent B:** ACN+0.1%TFA  
**Gradient:**

Time	A	B
0.0min	80%	20%
2.0min	80%	20%
7.0min	5%	95%
10.00min	0%	100%
12.00min	0%	100%
12.10min	80%	20%
15.00min	Stop	Stop

**Flow rate:** 1mL/min  
**Wavelength:** 280nm  
**Volume:** 3 $\mu$ l

## Result



Rank	RetTime(min)	Area(mAU*s)	Area %
1	4.601	5649.44531	99.7295
2	5.142	15.32595	0.2705

## Caution

**FOR RESEARCH PURPOSES ONLY.**

**NOT FOR HUMAN, VETERINARY DIAGNOSTIC OR THERAPEUTIC USE.**

**APEX BIO Technology**

**[www.apexbt.com](http://www.apexbt.com)**

7505 Fannin street, Suite 410, Houston, TX 77054.

Tel: +1-832-696-8203 | Fax: +1-832-641-3177 | Email: [info@apexbt.com](mailto:info@apexbt.com)