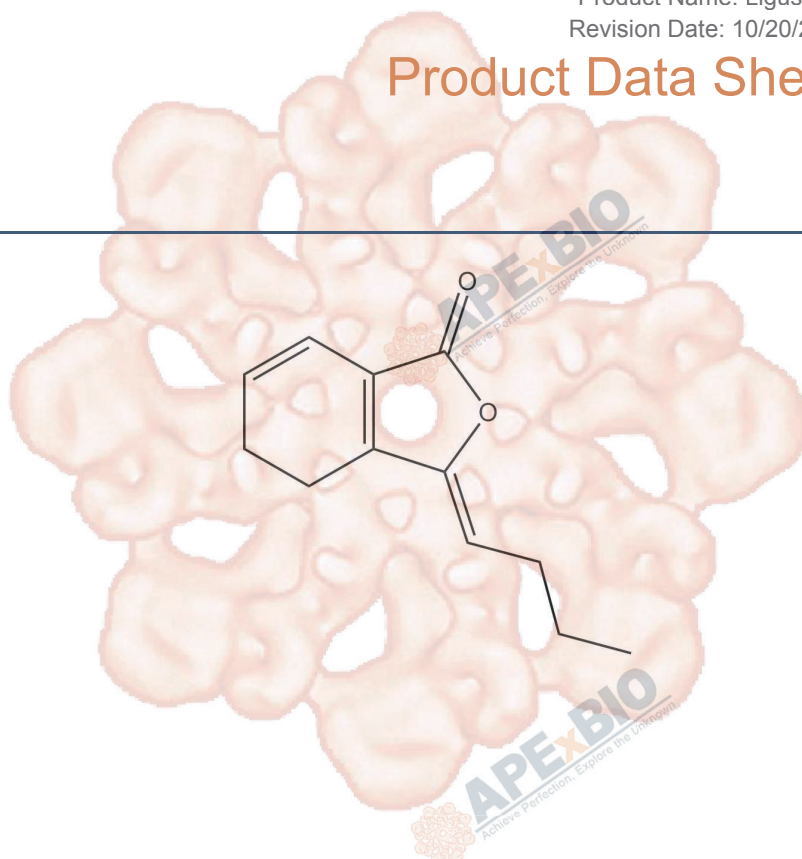


## Product Data Sheet

### Ligustilide

<b>Cat. No.:</b>	N1901
<b>CAS No.:</b>	4431-01-0
<b>Formula:</b>	C <sub>12</sub> H <sub>14</sub> O <sub>2</sub>
<b>M.Wt:</b>	190.24
<b>Synonyms:</b>	
<b>Target:</b>	Natural Products
<b>Pathway:</b>	
<b>Storage:</b>	Store at -20°C



### Solvent & Solubility

≥ 16.45mg/mL in DMSO

In Vitro

Preparing Stock Solutions	Solvent Concentration	Mass		
		1mg	5mg	10mg
	1 mM	5.2568 mL	26.2840 mL	52.5679 mL
	5 mM	1.0514 mL	5.2568 mL	10.5136 mL
	10 mM	0.5257 mL	2.6284 mL	5.2568 mL

Please refer to the solubility information to select the appropriate solvent.

### Biological Activity

Shortsummary

facilitates blood circulation and attenuates inflammatory pain behavior

IC<sub>50</sub> & Target

In Vitro

#### Cell Viability Assay

Preparation method:

In Vivo

#### Animal experiment

Applications:

### Product Citations

See more customer validations on [www.apexbt.com](http://www.apexbt.com).

## References

## Caution

**FOR RESEARCH PURPOSES ONLY.**

**NOT FOR HUMAN, VETERINARY DIAGNOSTIC OR THERAPEUTIC USE.**

*Specific storage and handling information for each product is indicated on the product datasheet. Most APExBIO products are stable under the recommended conditions. Products are sometimes shipped at a temperature that differs from the recommended storage temperature. Shortterm storage of many products are stable in the short-term at temperatures that differ from that required for long-term storage. We ensure that the product is shipped under conditions that will maintain the quality of the reagents. Upon receipt of the product, follow the storage recommendations on the product data sheet.*

**APExBIO Technology**

**[www.apexbt.com](http://www.apexbt.com)**

7505 Fannin street, Suite 410, Houston, TX 77054.

Tel: +1-832-696-8203 | Fax: +1-832-641-3177 | Email: [info@apexbt.com](mailto:info@apexbt.com)

