

# High Performance Liquid Chromatography

## Analysis Information

**Product Name:** Esculin  
**Operator:** David  
**Injection Date:** 7/22/2020 5:31:38 PM  
**Batch No.:** 2

## HPLC Condition

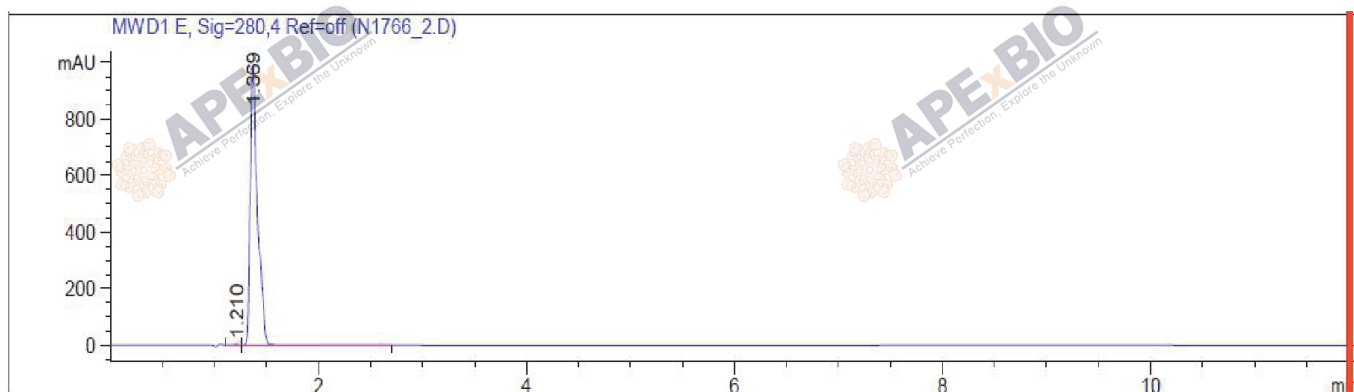
**Column :** ZORBAX Eclipse Pluse C18 3.5 $\mu$ m 4.6mmx100mm  
**Solvent A:** H2O+0.1%TFA  
**Solvent B:** ACN+0.1%TFA

**Gradient:**

| Time     | A    | B    |
|----------|------|------|
| 0.0min   | 80%  | 20%  |
| 2.0min   | 80%  | 20%  |
| 7.0min   | 5%   | 95%  |
| 10.00min | 0%   | 100% |
| 12.00min | 0%   | 100% |
| 15.00min | Stop | Stop |

**Flow rate:** 1mL/min  
**Wavelength:** 280nm  
**Volume:** 1 $\mu$ l

## Result



| Rank | RetTime(min) | Area(mAU*s) | Area %  |
|------|--------------|-------------|---------|
| 1    | 1.210        | 12.64086    | 0.2549  |
| 2    | 1.369        | 4946.36768  | 99.7451 |

## Caution

**FOR RESEARCH PURPOSES ONLY.**

**NOT FOR HUMAN, VETERINARY DIAGNOSTIC OR THERAPEUTIC USE.**

**APEX BIO Technology**

[www.apexbt.com](http://www.apexbt.com)

7505 Fannin street, Suite 410, Houston, TX 77054.

Tel: +1-832-696-8203 | Fax: +1-832-641-3177 | Email: [info@apexbt.com](mailto:info@apexbt.com)