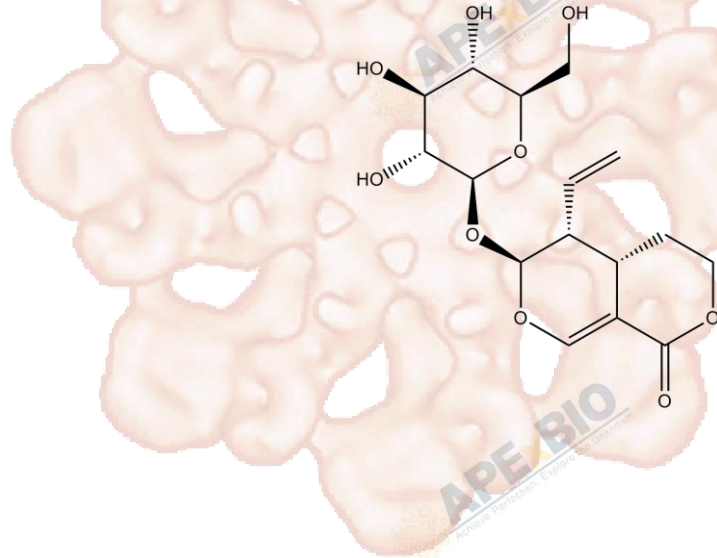


Product Data Sheet

Sweroside

Cat. No.:	N1314
CAS No.:	14215-86-2
Formula:	C ₁₆ H ₂₂ O ₉
M.Wt:	358.3
Synonyms:	
Target:	Natural Products
Pathway:	
Storage:	Store at -20°C



Solvent & Solubility

≥24.8 mg/mL in H₂O; ≥35.8 mg/mL in EtOH with gentle warming; ≥52.4 mg/mL in DMSO

In Vitro

Preparing Stock Solutions	Mass			
	Solvent Concentration	1mg	5mg	10mg
	1 mM	2.7910 mL	13.9548 mL	27.9096 mL
	5 mM	0.5582 mL	2.7910 mL	5.5819 mL
	10 mM	0.2791 mL	1.3955 mL	2.7910 mL

Please refer to the solubility information to select the appropriate solvent.

Biological Activity

Shortsummary

IC₅₀ & Target

In Vitro

Cell Viability Assay

Preparation method:

In Vivo

Animal experiment

Applications:

Product Citations

See more customer validations on www.apexbt.com.

References

Caution

FOR RESEARCH PURPOSES ONLY.

NOT FOR HUMAN, VETERINARY DIAGNOSTIC OR THERAPEUTIC USE.

Specific storage and handling information for each product is indicated on the product datasheet. Most APEX BIO products are stable under the recommended conditions. Products are sometimes shipped at a temperature that differs from the recommended storage temperature. Shortterm storage of many products are stable in the short-term at temperatures that differ from that required for long-term storage. We ensure that the product is shipped under conditions that will maintain the quality of the reagents. Upon receipt of the product, follow the storage recommendations on the product data sheet.

APEX BIO Technology

www.apexbt.com

7505 Fannin street, Suite 410, Houston, TX 77054.

Tel: +1-832-696-8203 | Fax: +1-832-641-3177 | Email: info@apexbt.com

