

## HyperFluor™ 488 Goat Anti-Rabbit IgG (H+L) Antibody

### General Information

<b>Name</b>	HyperFluor™ 488 Goat Anti-Rabbit IgG (H+L) Antibody
<b>Host species</b>	Goat
<b>Target species</b>	Rabbit
<b>Tested applications</b>	Suitable for: ICC/IF, IHC-Fr, IHC-P, ICC, Flow Cyt, ELISA
<b>Conjugation</b>	HyperFluor™ 488. Ex: 495 nm, Em: 519 nm

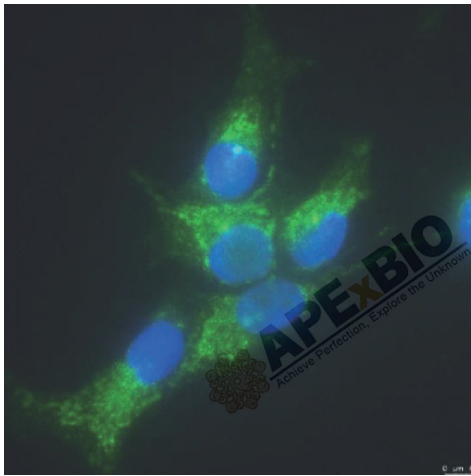
### Properties

<b>Form</b>	Liquid
<b>Storage buffer</b>	Preservative: 0.02% Sodium azide Constituents: 23% Glycerol, PBS, 1% BSA
<b>Storage instructions</b>	Shipped at 4°C. Store at 4°C short term (2 weeks). Upon delivery aliquot. Store at -20°C. Avoid freeze / thaw cycle. Stable for 12 months at -20°C. <b>Keep away from Light.</b>
<b>Concentration</b>	1 mg/mL
<b>Purity</b>	Immunogen affinity purified
<b>Purification notes</b>	This antibody was isolated by affinity chromatography using antigen coupled to agarose beads.
<b>Clonality</b>	Polyclonal
<b>Isotype</b>	IgG

### Applications

Application	Notes
ICC/IF	1/500-1/2000
IHC-Fr	Use at an assay dependent dilution.
IHC-P	1/100-1/500
Flow Cyt	1/250-1/1000
ELISA	Use at an assay dependent dilution.

### Images



Immunofluorescence analysis of HeLa cells, using PHB antibody as the primary antibody. The cells were incubated with the primary antibody overnight at 4 ° C.

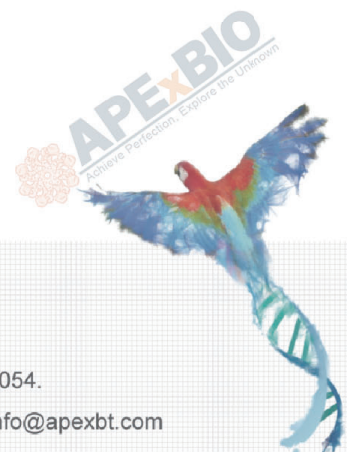
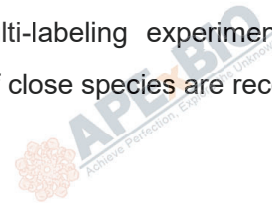
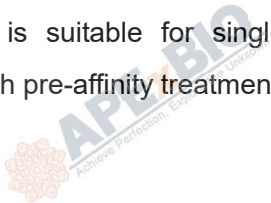
Secondary antibody: HyperFluor™ 488 Goat Anti-Rabbit IgG (H+L)  
Antibody at dilution of 1:500.

Blue: DAPI for nuclear staining.



## Notes

Our product is suitable for single-labeling experiment, to conduct multi-labeling experiments, secondary antibodies with pre-affinity treatment of serum proteins or immunoglobulin of close species are recommended.



**APEX BIO Technology**

**[www.apexbt.com](http://www.apexbt.com)**

7505 Fannin street, Suite 410, Houston, TX 77054.

Tel: +1-832-696-8203 | Fax: +1-832-641-3177 | Email: [info@apexbt.com](mailto:info@apexbt.com)