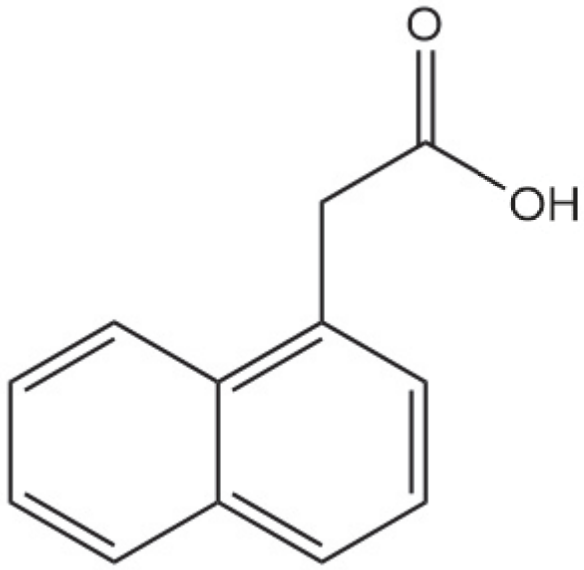


—12.42

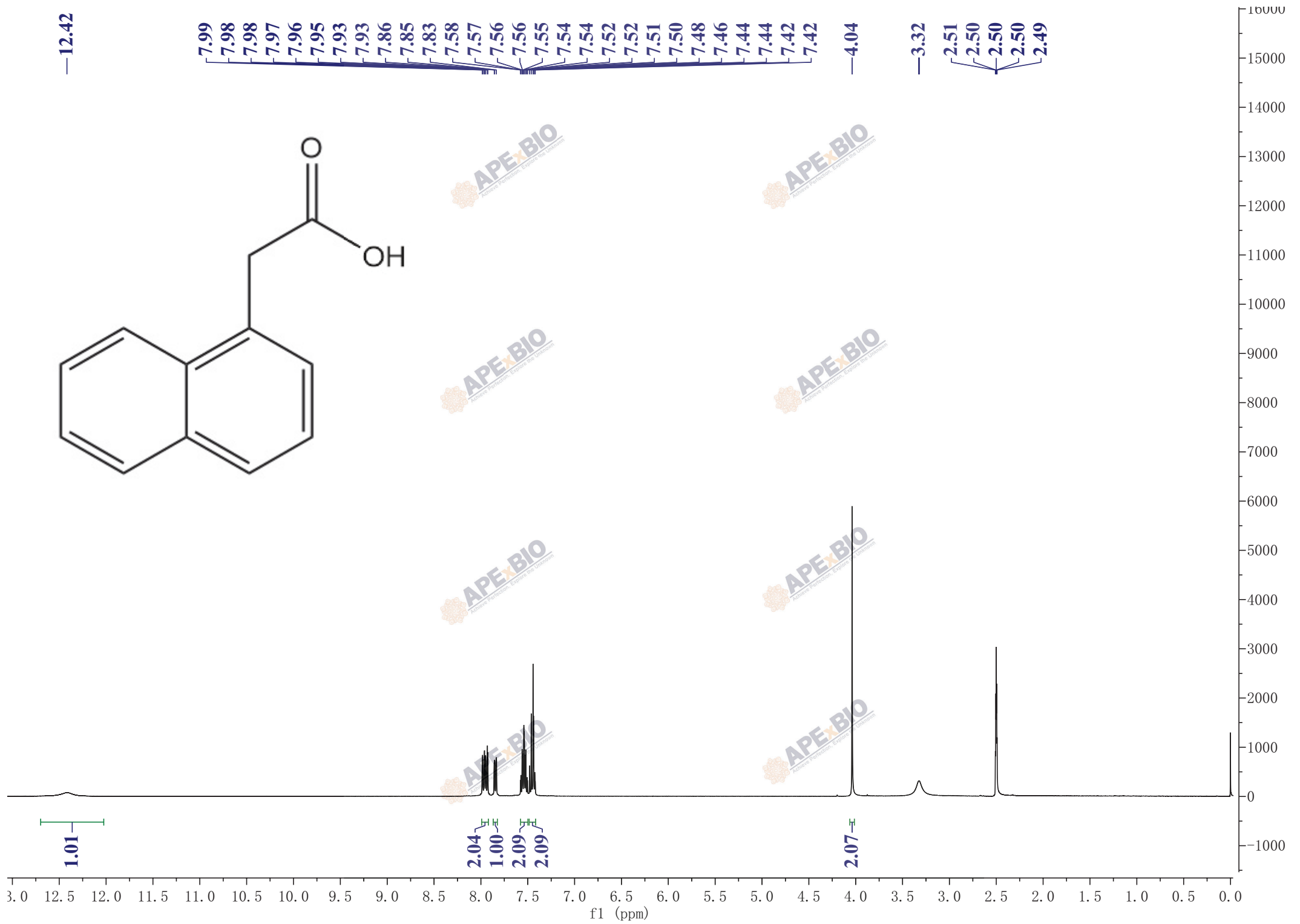


7.99
7.98
7.98
7.97
7.96
7.95
7.93
7.93
7.86
7.85
7.83
7.58
7.57
7.56
7.56
7.55
7.54
7.54
7.52
7.52
7.51
7.50
7.48
7.46
7.44
7.44
7.42
7.42

—4.04

—3.32

2.51
2.50
2.50
2.50
2.49



1.01

2.04

1.00

2.09

2.09

2.07