

# High Performance Liquid Chromatography

## Analysis Information

**Product Name:** Olivetol  
**Operator:** David  
**Injection Date:** 7/5/2021 11:41:01 AM  
**Batch No.:** 2

## HPLC Condition

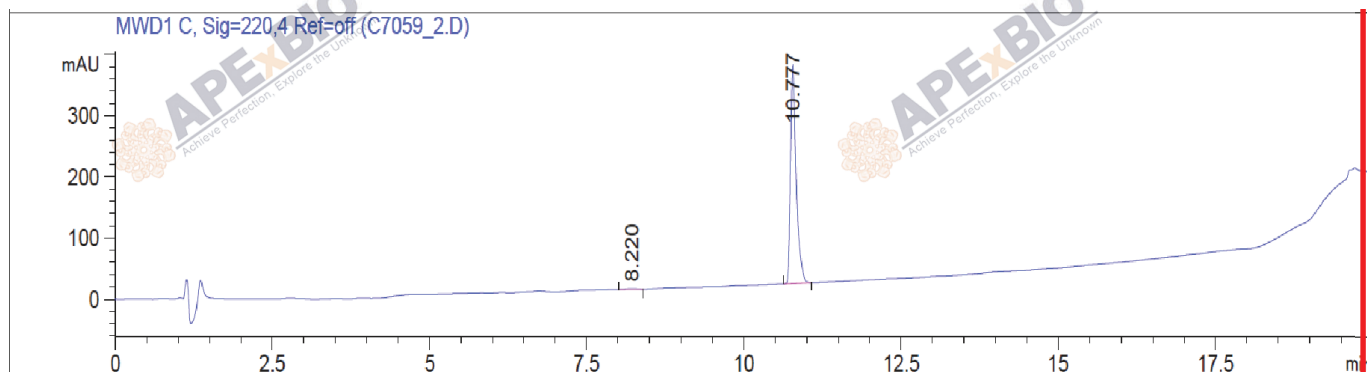
**Column :** ZORBAX Eclipse Pluse C18 3.5 $\mu$ m 4.6mmx100mm  
**Solvent A:** H2O+0.1%TFA  
**Solvent B:** ACN+0.1%TFA

**Gradient:**

Time	A	B
0.0min	80%	20%
2.0min	80%	20%
16.0min	20%	80%
17.00min	0%	100%
20.00min	0%	100%
23.00min	Stop	Stop

**Flow rate:** 1mL/min  
**Wavelength:** 220nm  
**Volume:** 3 $\mu$ l

## Result



Rank	RetTime(min)	Area(mAU*s)	Area %
1	8.220	17.26309	0.7566
2	10.777	2264.46948	99.2434

## Caution

**FOR RESEARCH PURPOSES ONLY.**

**NOT FOR HUMAN, VETERINARY DIAGNOSTIC OR THERAPEUTIC USE.**

**APEX BIO Technology**

**www.apexbt.com**

7505 Fannin street, Suite 410, Houston, TX 77054.

Tel: +1-832-696-8203 | Fax: +1-832-641-3177 | Email: info@apexbt.com