

# High Performance Liquid Chromatography

## Analysis Information

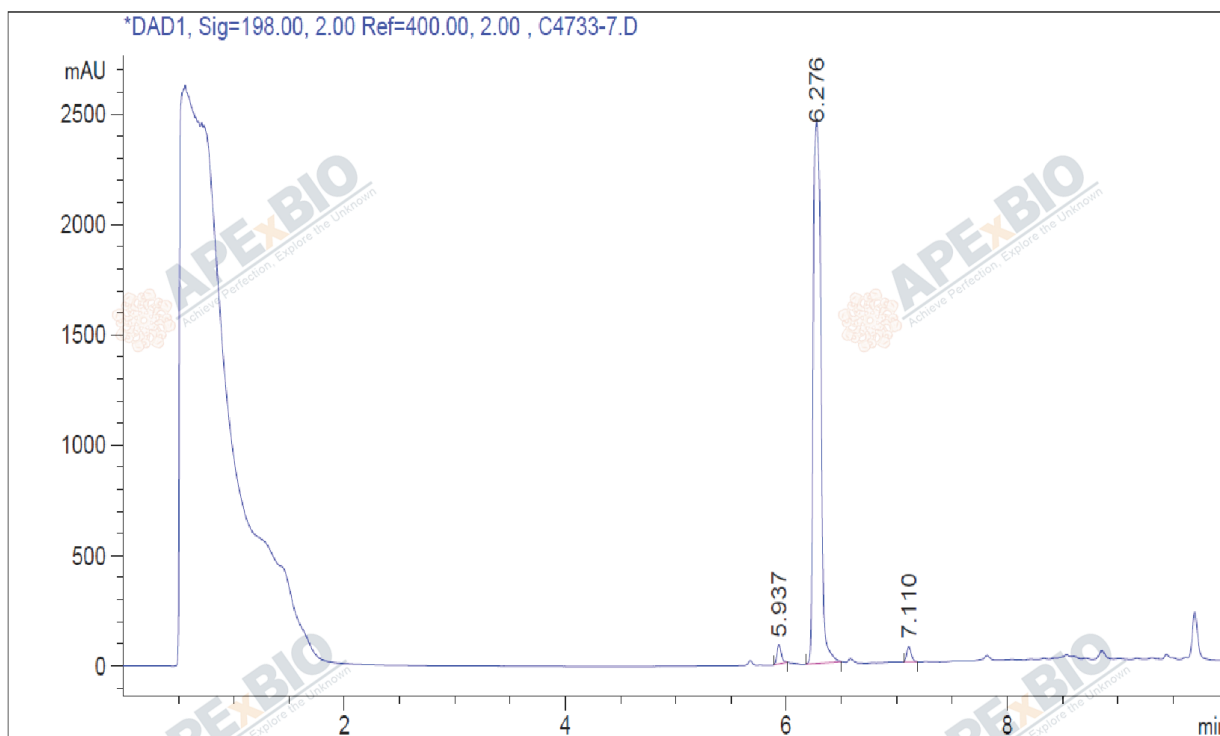
**Product Name:** Sulforaphane  
**Operator:** David  
**Injection Date:** 2/25/2022 1:32:33 PM  
**Batch No.:** 7

## HPLC Condition

**Column :** Athena C18, 3  $\mu$ m, 2.1mm  $\times$  100 mm  
**Solvent A:** ACN+0.1%TFA  
**Solvent B:** H2O+0.1%TFA  
**Gradient:**

Time	A	B
0.0min	0%	100%
2.0min	0%	100%
7.0min	95%	5%
10.0min	95%	5%
10.0min	Stop	Stop

**Flow rate:** 0.45ml/min  
**Wavelength:** 198nm  
**Volume:** 3 $\mu$ l



Rank	RetTime(min)	Area(mAU*s)	Area %
1	5.937	231.66719	1.9267
2	6.276	1.15973e4	96.4502
3	7.110	195.16502	1.6231

Caution

**FOR RESEARCH PURPOSES ONLY.**

**NOT FOR HUMAN, VETERINARY DIAGNOSTIC OR THERAPEUTIC USE.**

**APEX BIO Technology**

[www.apexbt.com](http://www.apexbt.com)

7505 Fannin street, Suite 410, Houston, TX 77054.

Tel: +1-832-696-8203 | Fax: +1-832-641-3177 | Email: info@apexbt.com