

# High Performance Liquid Chromatography

## 1. Analysis Information

Product Name:	Sulforaphane
Operator:	David
Injection Date:	1/25/2018 9:57:14 AM
Batch No.:	3

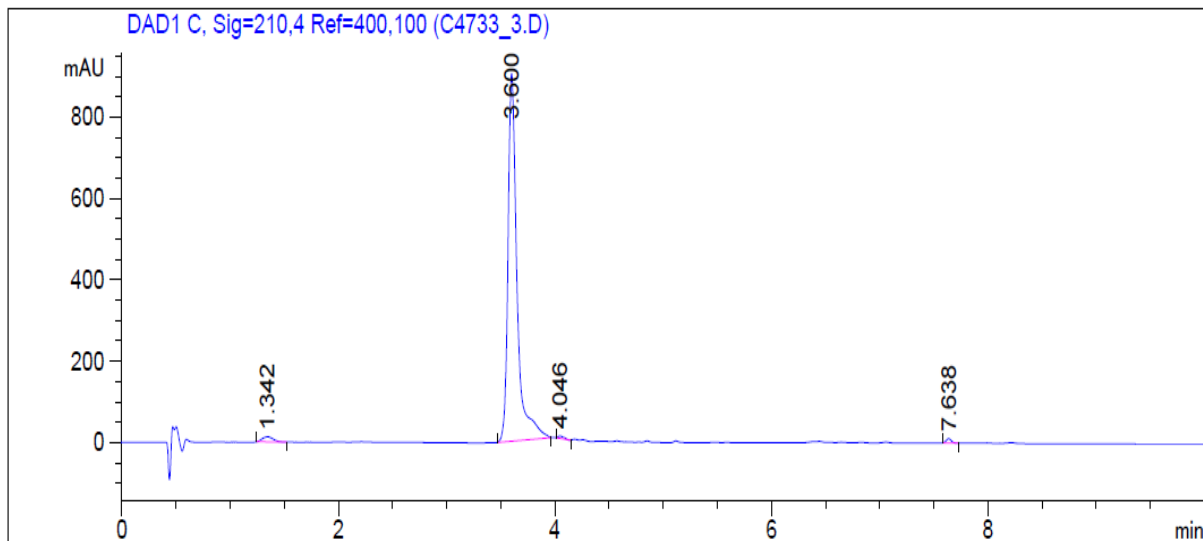
## 2. HPLC Condition

Column:	Athena C18, 3 $\mu$ m, 2.1mm $\times$ 100 mm
Solvent A:	0.1% H <sub>3</sub> PO <sub>4</sub> in 100% Acetonitrile
Solvent B:	0.1% H <sub>3</sub> PO <sub>4</sub> in 100% Water

Gradient:			
	Time	A	B
	0.0min	10%	90%
	6.0min	95%	5%
	10.0 min	95%	5%
	10.0min	Stop	Stop

Flow rate:	0.45ml/min
Wavelength:	210nm
Volume:	10 $\mu$ l

## 3. Result



Rank	RetTime(min)	Area(mAU*s)	Area %
1	1.342	63.66790	1.1943
2	3.600	5231.47803	98.1360
3	4.046	13.37509	0.2509
4	7.638	22.32656	0.4188