

Certificate of Analysis

Product Name: Palmitoleic Acid methyl ester
Cat. No.: C4143
Batch No.: 1

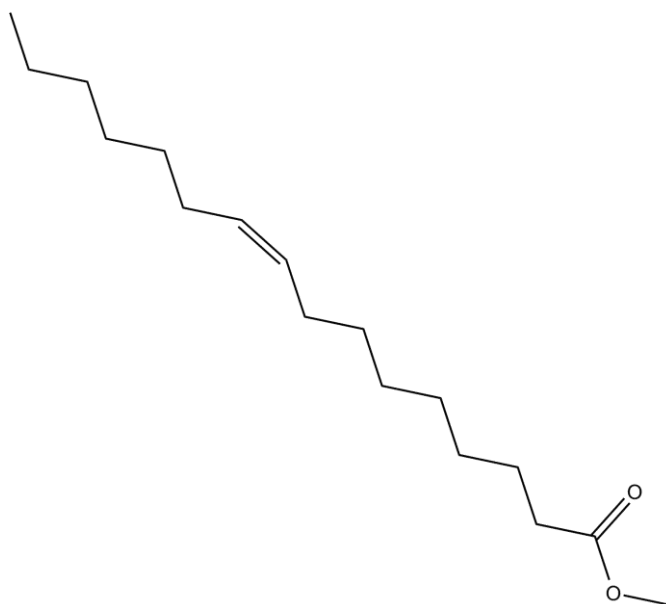
Physical and Chemical Properties

Batch Molecular Formula: C₁₇H₃₂O₂
Batch Molecular Weight: 268.43
Purity: >98%
Cas No.: 1120-25-8

Analytical Data

HPLC: Shows Min 98% purity
Mass Spectrum: Consistent with structure

Structure



Caution

FOR RESEARCH PURPOSES ONLY.

NOT FOR HUMAN, VETERINARY DIAGNOSTIC OR THERAPEUTIC USE.

APEX BIO Technology

www.apexbt.com

7505 Fannin Street, Suite 410, Houston, TX 77054.

Tel: +1-832-696-8203 | Fax: +1-832-641-3177 | Email: info@apexbt.com