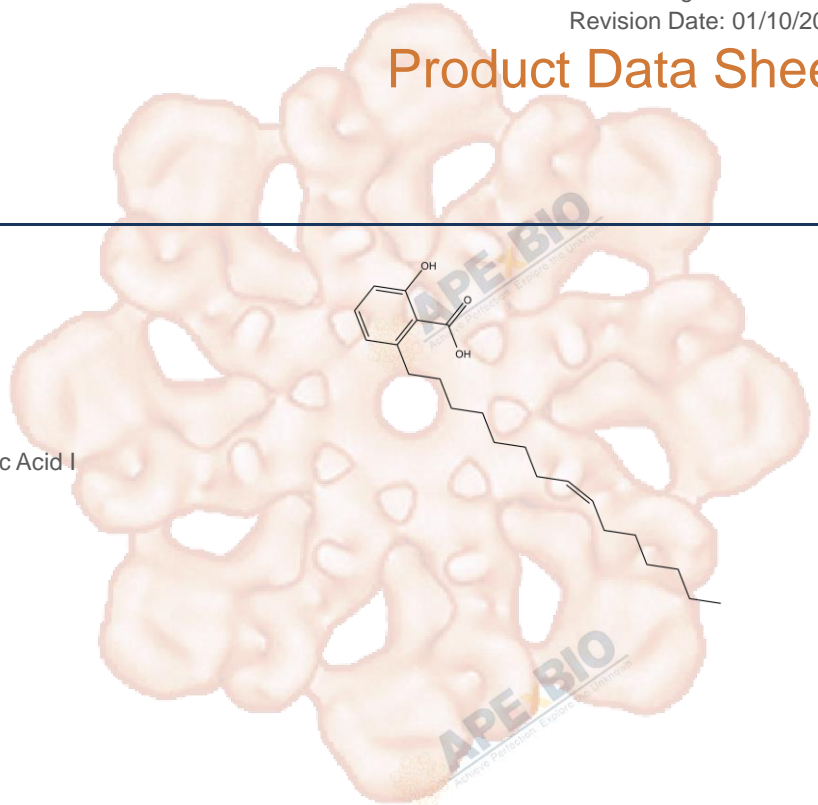


Product Data Sheet

Ginkgolic Acid C15:1

Cat. No.:	C3421
CAS No.:	22910-60-7
Formula:	C22H34O3
M.Wt:	346.5
Synonyms:	Anacardic Acid 15:1, Ginkgolic Acid I
Target:	Chromatin/Epigenetics
Pathway:	SUMOylation
Storage:	Store at -20°C



Solvent & Solubility

insoluble in H₂O; ≥44 mg/mL in EtOH; ≥46 mg/mL in DMSO

In Vitro

Preparing Stock Solutions	Solvent	Mass		
		1mg	5mg	10mg
	Concentration			
	1 mM	2.8860 mL	14.4300 mL	28.8600 mL
	5 mM	0.5772 mL	2.8860 mL	5.7720 mL
	10 mM	0.2886 mL	1.4430 mL	2.8860 mL

Please refer to the solubility information to select the appropriate solvent.

Biological Activity

Shortsummary

inhibits SUMOylation

IC₅₀ & Target

In Vitro

Cell Viability Assay

Preparation method:

In Vivo

Animal experiment

Applications:

Product Citations

See more customer validations on www.apexbt.com.

References

Caution

FOR RESEARCH PURPOSES ONLY.

NOT FOR HUMAN, VETERINARY DIAGNOSTIC OR THERAPEUTIC USE.

Specific storage and handling information for each product is indicated on the product datasheet. Most APEX BIO products are stable under the recommended conditions. Products are sometimes shipped at a temperature that differs from the recommended storage temperature. Shortterm storage of many products are stable in the short-term at temperatures that differ from that required for long-term storage. We ensure that the product is shipped under conditions that will maintain the quality of the reagents. Upon receipt of the product, follow the storage recommendations on the product data sheet.

APEX BIO Technology

www.apexbt.com

7505 Fannin street, Suite 410, Houston, TX 77054.

Tel: +1-832-696-8203 | Fax: +1-832-641-3177 | Email: info@apexbt.com

