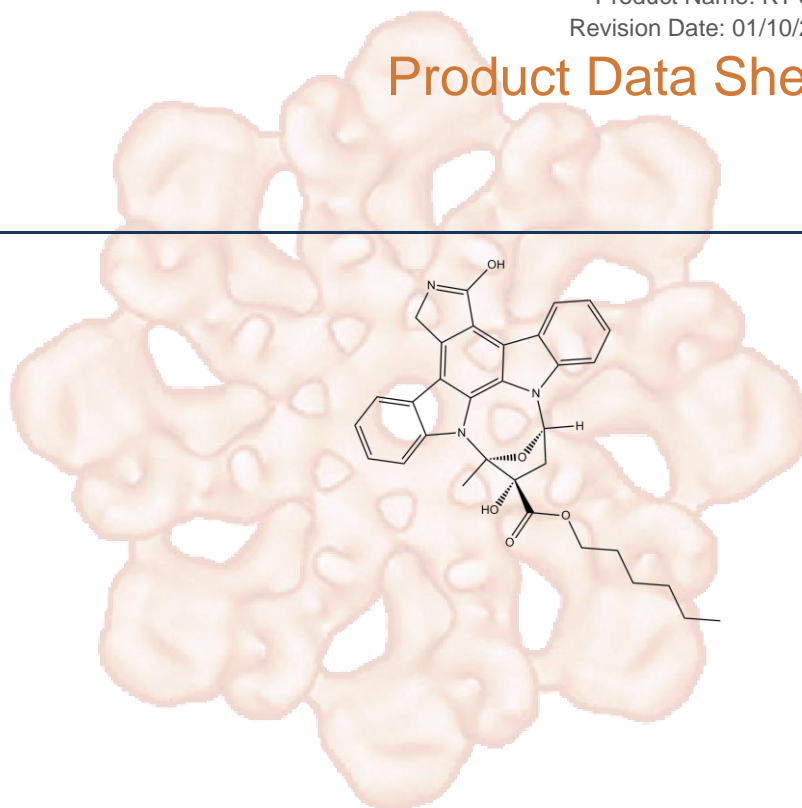


Product Data Sheet

KT 5720

Cat. No.:	B9002
CAS No.:	108068-98-0
Formula:	C32H31N3O5
M.Wt:	537.61
Synonyms:	
Target:	MAPK Signaling
Pathway:	PKA
Storage:	Store at -20°C



Solvent & Solubility

Soluble in DMSO

In Vitro

Preparing Stock Solutions	Solvent Concentration	Mass	1mg	5mg	10mg
	1 mM		1.8601 mL	9.3004 mL	18.6008 mL
	5 mM		0.3720 mL	1.8601 mL	3.7202 mL
	10 mM		0.1860 mL	0.9300 mL	1.8601 mL

Please refer to the solubility information to select the appropriate solvent.

Biological Activity

Shortsummary

protein kinase A inhibitor, potent and selective

 IC₅₀ & Target

In Vitro

Cell Viability Assay

Preparation method:

In Vivo

Animal experiment

Applications:

Product Citations

See more customer validations on www.apexbt.com.

References

Caution

FOR RESEARCH PURPOSES ONLY.

NOT FOR HUMAN, VETERINARY DIAGNOSTIC OR THERAPEUTIC USE.

Specific storage and handling information for each product is indicated on the product datasheet. Most APEX BIO products are stable under the recommended conditions. Products are sometimes shipped at a temperature that differs from the recommended storage temperature. Shortterm storage of many products are stable in the short-term at temperatures that differ from that required for long-term storage. We ensure that the product is shipped under conditions that will maintain the quality of the reagents. Upon receipt of the product, follow the storage recommendations on the product data sheet.

APEX BIO Technology

www.apexbt.com

7505 Fannin Street, Suite 410, Houston, TX 77054.

Tel: +1-832-696-8203 | Fax: +1-832-641-3177 | Email: info@apexbt.com

