

High Performance Liquid Chromatography

Analysis Information

Product Name: KDU691
Operator: David
Injection Date: 7/16/2021 3:19:31 AM
Batch No.: 2

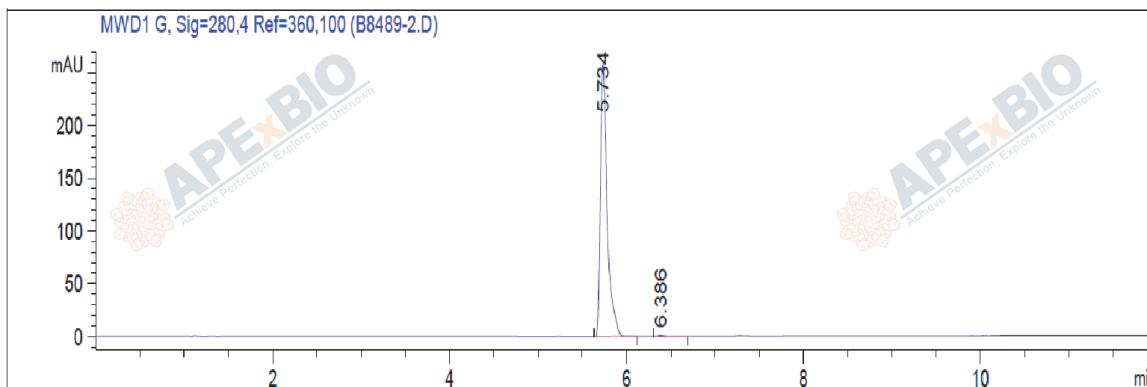
HPLC Condition

Column : ZORBAX Eclipse Pluse C18 3.5 μ m 4.6mmx100mm
Solvent A: H2O+0.1%TFA
Solvent B: ACN+0.1%TFA
Gradient:

Time	A	B
0.0min	80%	20%
2.0min	80%	20%
16.0min	20%	80%
17.0min	0%	100%
20.0min	0%	100%
23.0min	Stop	Stop

Flow rate: 1ml/min
Wavelength: 280nm
Volume: 5 μ l

Result



Rank	RetTime(min)	Area(mAU*s)	Area %
1	5.734	1384.75146	99.5793
2	6.386	5.85036	0.4207

Caution

FOR RESEARCH PURPOSES ONLY.

NOT FOR HUMAN, VETERINARY DIAGNOSTIC OR THERAPEUTIC USE.

APEX BIO Technology

www.apexbt.com

7505 Fannin street, Suite 410, Houston, TX 77054.

Tel: +1-832-696-8203 | Fax: +1-832-641-3177 | Email: info@apexbt.com