

# High Performance Liquid Chromatography

## Analysis Information

**Product Name:** Chlorin e6  
**Operator:** David  
**Injection Date:** 8/9/2022 10:38:53 AM  
**Batch No.:** 3

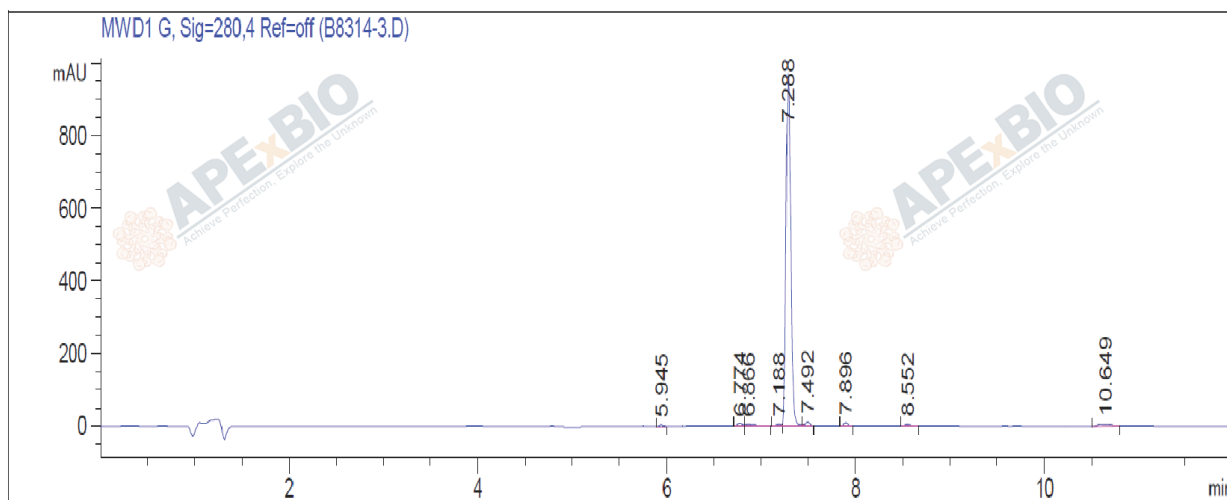
## HPLC Condition

**Column :** ZORBAX Eclipse Pluse C18 3.5 $\mu$ m 4.6mmx100mm  
**Solvent A:** H2O+0.1%TFA  
**Solvent B:** ACN+0.1%TFA  
**Gradient:**

Time	A	B
0.0min	80%	20%
2.0min	80%	20%
7.0min	5%	95%
10.0min	0%	100%
12.0min	0%	100%
15.0min	Stop	Stop

**Flow rate:** 1ml/min  
**Wavelength:** 280nm  
**Volume:** 5 $\mu$ l

## Result



Rank	RetTime(min)	Area(mAU*s)	Area %
1	5.945	8.49563	0.2452
2	6.774	24.11647	0.6961
3	6.866	26.00741	0.7507
4	7.188	14.93962	0.4312
5	7.288	3262.60986	94.1779
6	7.492	29.05582	0.8387
7	7.896	28.72009	0.8290
8	8.552	17.04895	0.4921
9	10.649	53.31192	1.5389

## Caution

**FOR RESEARCH PURPOSES ONLY.**

**NOT FOR HUMAN, VETERINARY DIAGNOSTIC OR THERAPEUTIC USE.**

[www.apexbt.com](http://www.apexbt.com)

7505 Fannin street, Suite 410, Houston, TX 77054.

Tel: +1-832-696-8203 | Fax: +1-832-641-3177 | Email: [info@apexbt.com](mailto:info@apexbt.com)

