

High Performance Liquid Chromatography

Analysis Information

Product Name: ML385
Operator: David
Injection Date: 8/11/2021 2:18:35 PM
Batch No.: 3

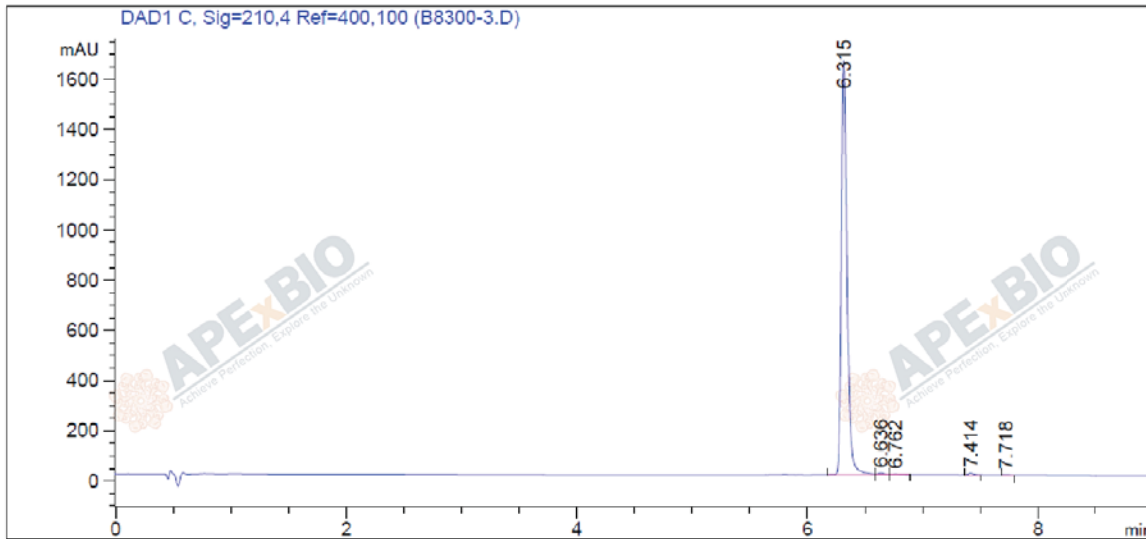
HPLC Condition

Column : Athena C18, 3 μ m, 2.1mm \times 100 mm
Solvent A: ACN+0.1%TFA
Solvent B: H2O+0.1%TFA
Gradient:

Time	A	B
0.0min	10%	90%
5.0min	95%	5%
9.0min	95%	5%
25.0min	Stop	Stop

Flow rate: 0.46ml/min
Wavelength: 210nm
Volume: 3 μ l

Result



Rank	RetTime(min)	Area(mAU*s)	Area %
1	6.315	5622.17188	98.7356
2	6.636	32.37823	0.5686
3	6.762	14.46274	0.2540
4	7.414	21.52249	0.3780
5	7.718	3.63410	0.0638

Caution

FOR RESEARCH PURPOSES ONLY.

NOT FOR HUMAN, VETERINARY DIAGNOSTIC OR THERAPEUTIC USE.

APEX BIO Technology

www.apexbt.com

7505 Fannin street, Suite 410, Houston, TX 77054.

Tel: +1-832-696-8203 | Fax: +1-832-641-3177 | Email: info@apexbt.com