

# High Performance Liquid Chromatography

## Analysis Information

**Product Name:** Atipamezole hydrochloride  
**Operator:** David  
**Injection Date:** 9/25/2018 8:32:33 PM  
**Batch No.:** 2

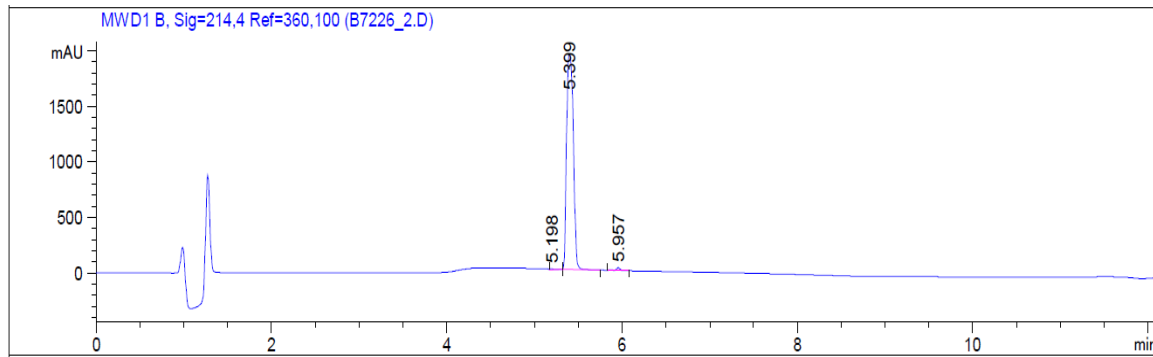
## HPLC Condition

**Column :** ZORBAX Eclipse Pluse C18 3.5 $\mu$ m 4.6mmx100mm  
**Solvent A:** H2O+1% TFA  
**Solvent B:** ACN+1% TFA  
**Gradient:**

Time	A	B
0.0min	80%	20%
2.0min	80%	20%
7.0min	5%	95%
10.0min	0%	100%
12.0min	0%	100%
12.1min	80%	20%
3.9min	Stop	Stop

**Flow rate:** 1ml/min  
**Wavelength:** 214nm  
**Volume:** 5 $\mu$ l

## Result



Rank	RetTime(min)	Area(mAU*s)	Area %
1	5.198	27.35544	0.2627
2	5.399	1.03042e4	98.9548
3	5.957	81.48566	0.7825

## Caution

**FOR RESEARCH PURPOSES ONLY.**

**NOT FOR HUMAN, VETERINARY DIAGNOSTIC OR THERAPEUTIC USE.**

**APEX BIO Technology**

**[www.apexbt.com](http://www.apexbt.com)**

7505 Fannin street, Suite 410, Houston, TX 77054.

Tel: +1-832-696-8203 | Fax: +1-832-641-3177 | Email: [info@apexbt.com](mailto:info@apexbt.com)